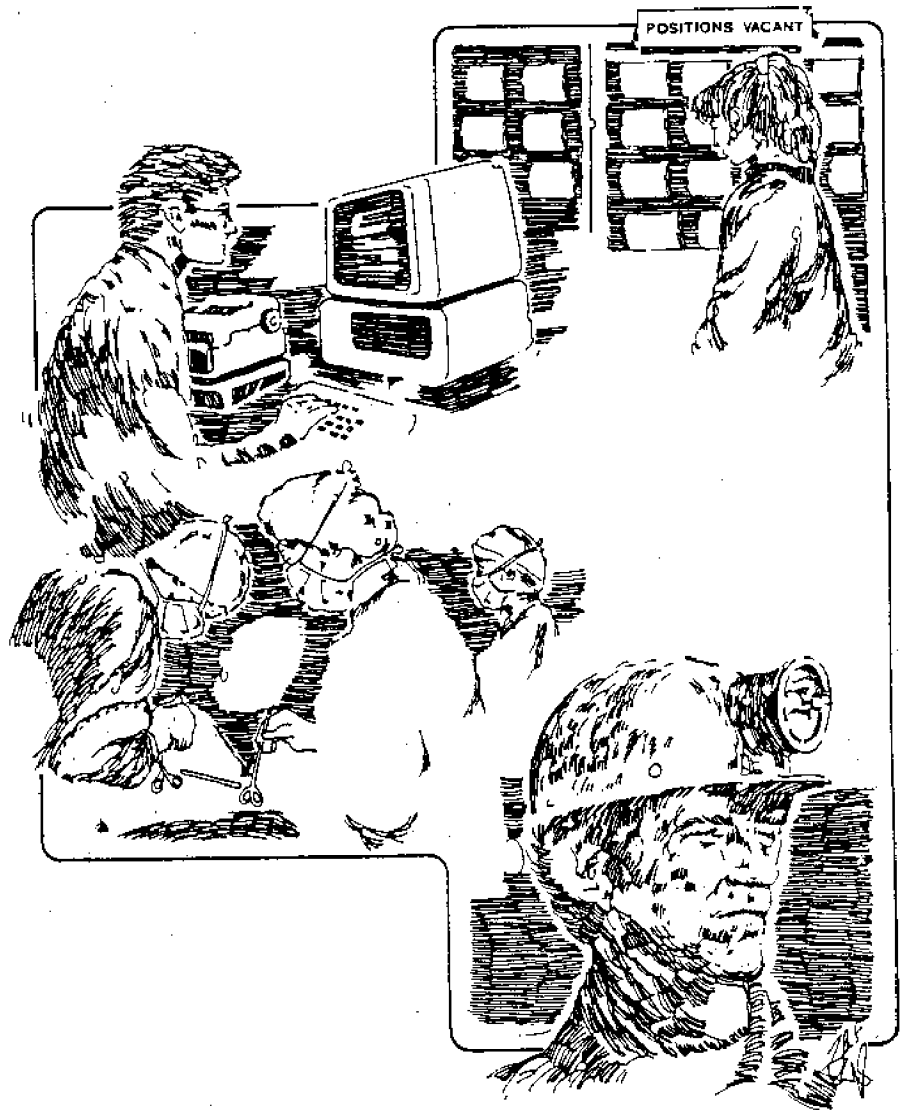
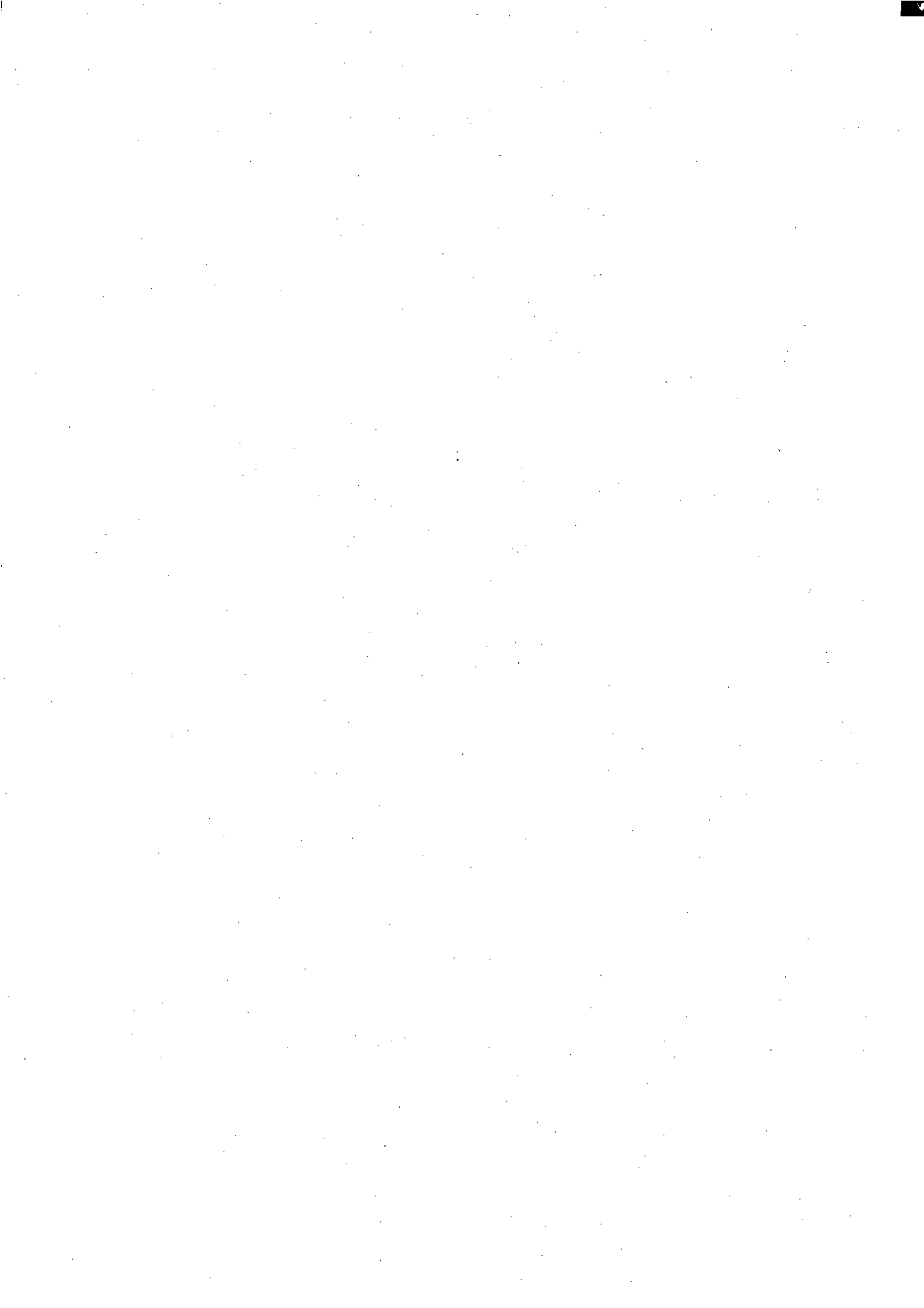




NOVEMBER 1993

**THE LABOUR FORCE
QUEENSLAND**





THE LABOUR FORCE, QUEENSLAND, NOVEMBER 1993

CONTENTS

<i>Table</i>	<i>Page</i>
.. Summary of Findings	2
<i>Diagram</i>	
1 Employed persons: Monthly percentage change, Australia and Queensland, November 1981 to November 1993	2
2 Unemployment rate, Australia and Queensland, November 1981 to November 1993	2
3 Unemployment rate: Regions of Queensland, November 1993	3
4 Labour force status: Trend series, Queensland, November 1981 to November 1993	7
5 Youth unemployment rate: Persons aged 15 to 19 years, Queensland, November 1991 to November 1993	12
6 Females as a proportion of total employed by selected industry division, Queensland, November 1981 to November 1993	15
7 Employment by occupation by Brisbane and Balance of Queensland Major Statistical Regions, November 1993	17
<i>Table</i>	
1 Labour force, seasonally adjusted series, Queensland, November 1992 to November 1993	2
2 Employment and unemployment change for selected groups, Queensland, November 1992 and November 1993	3
Labour force status of the civilian population aged 15 years and over, Queensland	
3 Original series, September 1992 to November 1993	4
4 Seasonally adjusted series, September 1992 to November 1993	5
5 Trend series, September 1992 to November 1993	6
6 Statistical regions, September 1993	8
7 Statistical regions, October 1993	9
8 Statistical regions, November 1993	10
9 Age by statistical region, November 1993	11
10 Persons aged 15 to 19 years by full-time attendance at an educational institution, November 1993	13
11 Persons aged 20 to 24 years by full-time attendance at a tertiary institution, November 1993	13
Employed persons, Queensland	
12 Full-time or part-time status, September 1992 to November 1993	14
13 Average hours worked by status of worker, industry and occupation, November 1993	15
14 Status of worker, industry and occupation, November 1993	16
15 Industry by occupation, November 1993	16
16 Status of worker, industry and occupation by statistical region, November 1993	17
Unemployed persons, Queensland	
17 Duration of unemployment, September 1992 to November 1993	19
18 Duration of unemployment by statistical region, November 1993	20
19 Unemployed persons and unemployment rates: Industry and occupation of last full-time job, Queensland, November 1992 to November 1993	21
.. Special surveys data relating to the labour force	22
.. Maps showing statistical regions of Queensland and Brisbane Major Statistical Region	24
.. Explanatory Notes	25
.. Technical Notes	28
.. Glossary	31

R. A. Crockett
DEPUTY COMMONWEALTH STATISTICIAN

313 Adelaide Street
BRISBANE Q 4000
14 January 1994

© Commonwealth of Australia 1994

INQUIRIES

- for information about statistics in this publication, the availability of related unpublished statistics, and about other ABS statistics and services please contact Information Inquiries on (07) 222 6351 or any ABS State office.

SUMMARY OF FINDINGS

Overview

Seasonally adjusted employment in Queensland increased by 20,500 from August 1993 to November 1993, while the number of unemployed persons rose marginally to 172,900 resulting in the unemployment rate falling slightly. The labour force participation rate was 63.7 per cent, 0.4 percentage points higher than in August 1993.

For Australia, seasonally adjusted employment increased by 99,900 while the number of unemployed persons rose by 14,900 from August 1993 to November 1993. Over the same period the unemployment rate remained unchanged at 11.1 per cent.

TABLE 1 — LABOUR FORCE, QUEENSLAND
(Seasonally adjusted series)

Particulars	Unit	November 1992	August 1993	September 1993	October 1993	November 1993	Annual percentage change
Employed	'000	1,352.0	1,365.9	1,375.5	1,390.7	1,386.4	+ 2.5
Unemployed	'000	169.4	172.1	172.2	164.2	172.9	+2.1
Unemployment rate	%	11.1	11.2	11.1	10.6	11.1	..
Participation rate	%	63.9	63.3	63.5	63.7	63.7	..
Labour force	'000	1,521.4	1,538.1	1,547.7	1,554.9	1,559.3	+ 2.5

Of the unemployed, the number in Queensland looking for full-time work increased by 4,600 persons to 131,000 over the year to November 1993, a rise of 3.6 per cent. Over the same period the number of persons looking for part-time employment decreased slightly to 24,200 persons. The median duration of unemployment fell from 26 weeks in November 1992 to 14 weeks in February 1993 with school leavers entering the labour market, before rising again to 26 weeks in August 1993, remaining at that level in November 1993.

Over the year to November 1993 the construction industry showed the largest increase in the number employed, rising 11,600 (10.2 per cent) to 125,000 while the number of persons unemployed within this industry fell slightly. Employment in the manufacturing industry increased by 6,500 (3.9 per cent), while the number unemployed decreased marginally. The number employed in the recreation, personal and other services industry fell slightly while the number unemployed increased by 6,000.

Trend series

The number of employed Queenslanders increased by 10,800 to 1,385,900 from August to November 1993 while the number of unemployed persons rose by 5,700 to 171,700 over the same period. The number of employed Australians increased by 59,300 from August to November 1993 while the number of unemployed persons increased by 22,000 over the same period.

DIAGRAM 1 - EMPLOYED PERSONS:
MONTHLY PERCENTAGE CHANGE
(Trend series)

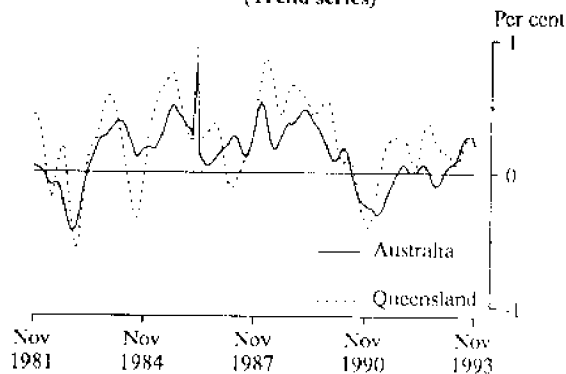
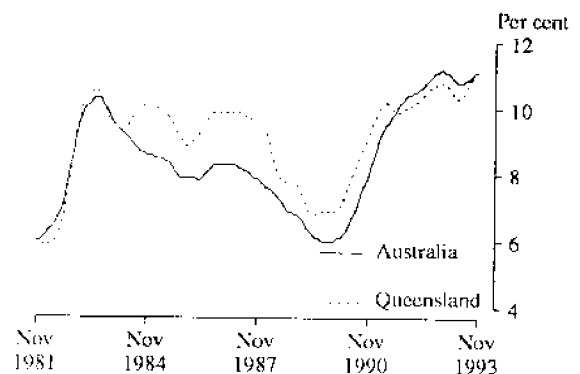


DIAGRAM 2 - UNEMPLOYMENT RATE
(Trend series)



Regional estimates

The unemployment rate for the Brisbane Major Statistical Region (MSR) in November 1993 was 9.6 per cent and for the Balance of Queensland 10.4 per cent. The South and East BSD Balance had the highest unemployment rate in the Brisbane MSR at 11.2 per cent while the Brisbane City Outer Ring had the lowest rate of 7.7 per cent.

SUMMARY OF FINDINGS — *continued*

For the Balance of Queensland the region with the highest unemployment rate was North and West Moreton with 13.4 per cent. South and East Moreton recorded a rate of 12.8 per cent followed by Wide Bay-Burnett with 11.4 per cent. The Darling Downs and South-West Statistical Divisions had the lowest unemployment rate of 7.3 per cent.

Youth estimates

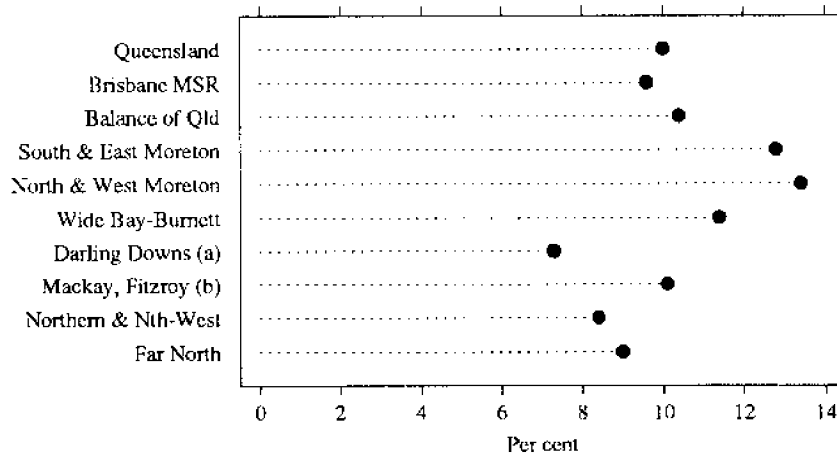
The number of 15 to 19 year olds in the Queensland labour force decreased marginally to 138,800 persons over the year to November 1993 while the number employed fell slightly to 110,700 persons. The unemployment rate for this group decreased from 20.8 per cent in November 1992 to 20.2 per cent in November 1993 and the participation rate fell from 58.8 per cent in November 1992 to 58.1 per cent in November 1993.

There were 183,600 employed 20 to 24 year olds in November 1993, an increase of 6,300 (3.6 per cent) over the 12 month period, mainly in full-time work. The participation rate of this age group fell from 81.2 per cent in November 1992 to 80.6 per cent in November 1993 and the unemployment rate decreased from 14.8 per cent to 13.6 per cent over the same period.

TABLE 2 — EMPLOYMENT AND UNEMPLOYMENT CHANGE FOR SELECTED GROUPS, QUEENSLAND

Particulars	Employed ('000)		Annual percentage change	Unemployed ('000)		Annual percentage change
	November 1992	November 1993		November 1992	November 1993	
Males	781.7	810.2	+ 3.6	93.3	88.1	- 5.6
Females	574.7	580.3	+ 1.0	58.8	67.1	+ 14.1
Persons aged (years)						
15 - 19	112.2	110.7	- 1.3	29.5	28.1	- 4.7
20 - 24	177.3	183.6	+ 3.6	30.7	28.8	- 6.2
25 - 44	694.8	703.4	+ 1.2	65.3	69.6	+ 6.6
45 and over	372.2	392.8	+ 5.5	26.5	28.8	+ 8.7
Full-time workers	1,024.3	1,064.4	+ 3.9
Part-time workers	332.1	326.1	- 1.8
Looking for full-time work	126.4	131.0	+ 3.6
Looking for part-time work	25.6	24.2	- 5.5
Selected industries						
Manufacturing	168.6	175.1	+ 3.9	17.2	16.7	- 2.9
Construction	113.4	125.0	+ 10.2	11.1	8.2	- 26.1
Wholesale and retail trade	301.1	307.1	+ 2.0	16.8	18.0	+ 7.1
Community services	257.7	259.2	+ 0.6	6.3	6.8	+ 7.9
Recreation, personal and other services	116.8	114.1	- 2.3	8.9	14.9	+ 67.4
Queensland	1,356.5	1,390.5	+ 2.5	152.0	155.2	+ 2.1

DIAGRAM 3 - UNEMPLOYMENT RATE: REGIONS OF QUEENSLAND, NOVEMBER 1993



(a) Including South-West. (b) Including Central-West.

TABLE 3 — LABOUR FORCE STATUS: ORIGINAL SERIES, QUEENSLAND

Month	Employed		Unemployed		Labour force	Not in labour force	Civilian population aged 15 years and over	Unemployment rate	Participation rate
	Full-time	Total	Looking for full-time work	Total					
	'000	'000	'000	'000					
MALES									
1992 —									
September	703.6	788.9	80.1	90.5	879.3	293.6	1,173.0	10.3	75.0
October	704.6	787.5	76.2	86.2	873.7	301.8	1,175.5	9.9	74.3
November	704.4	781.7	84.9	93.3	875.0	303.0	1,178.0	10.7	74.3
December	717.1	796.8	87.5	100.0	896.8	283.8	1,180.6	11.1	76.0
1993 —									
January	699.6	781.2	102.3	112.7	893.9	289.5	1,183.4	12.6	75.5
February	702.8	783.7	99.1	110.4	894.1	292.1	1,186.1	12.3	75.4
March	708.7	792.7	97.4	105.5	898.2	290.7	1,188.9	11.8	75.5
April	709.0	786.9	97.2	105.6	892.5	299.4	1,191.9	11.8	74.9
May	710.1	788.4	97.8	106.1	894.5	300.3	1,194.8	11.9	74.9
June	721.7	801.8	90.7	98.7	900.5	297.3	1,197.8	11.0	75.2
July	723.9	808.3	82.1	89.4	897.7	302.8	1,200.5	10.0	74.8
August	711.3	795.2	86.0	95.2	890.4	312.8	1,203.2	10.7	74.0
September	720.9	806.1	89.1	99.9	906.0	299.9	1,205.9	11.0	75.1
October	729.2	815.8	76.5	85.7	901.5	307.3	1,208.8	9.5	74.6
November	731.4	810.2	79.4	88.1	898.4	313.3	1,211.7	9.8	74.1
FEMALES									
1992 —									
September	321.6	581.4	39.9	62.7	644.1	551.6	1,195.6	9.7	53.9
October	323.6	577.2	37.8	56.3	633.5	564.8	1,198.3	8.9	52.9
November	320.0	574.7	41.5	58.8	633.5	567.5	1,201.0	9.3	52.7
December	332.9	578.1	47.5	68.0	646.0	557.7	1,203.7	10.5	53.7
1993 —									
January	340.0	562.5	49.4	63.6	626.1	580.4	1,206.5	10.2	51.9
February	330.2	562.2	53.3	69.0	631.1	578.2	1,209.3	10.9	52.2
March	342.2	581.0	46.6	68.0	648.9	563.2	1,212.1	10.5	53.5
April	330.0	575.1	41.7	57.1	632.2	583.0	1,215.1	9.0	52.0
May	326.4	574.2	42.3	55.4	629.6	588.6	1,218.2	8.8	51.7
June	330.9	571.5	46.1	59.1	630.6	590.7	1,221.3	9.4	51.6
July	334.3	568.1	47.8	65.3	633.4	590.7	1,224.0	10.3	51.7
August	320.5	565.4	48.1	65.2	630.6	596.2	1,226.8	10.3	51.4
September	328.8	586.2	46.1	62.9	649.1	580.5	1,229.6	9.7	52.8
October	332.7	583.3	41.5	60.2	643.5	588.8	1,232.3	9.4	52.2
November	333.1	580.3	51.6	67.1	647.4	587.7	1,235.1	10.4	52.4
PERSONS									
1992 —									
September	1,025.1	1,370.3	120.0	153.1	1,523.4	845.2	2,368.6	10.1	64.3
October	1,028.2	1,364.7	114.0	142.5	1,507.2	866.6	2,373.8	9.5	63.5
November	1,024.3	1,356.5	126.4	152.0	1,508.5	870.6	2,379.1	10.1	63.4
December	1,050.0	1,374.9	135.0	167.9	1,542.8	841.5	2,384.3	10.9	64.7
1993 —									
January	1,039.6	1,343.7	151.7	176.3	1,520.0	869.8	2,389.9	11.6	63.6
February	1,033.0	1,345.9	152.4	179.3	1,525.2	870.3	2,395.4	11.8	63.7
March	1,050.9	1,373.6	144.0	173.5	1,547.1	853.9	2,401.0	11.2	64.4
April	1,039.0	1,362.0	138.9	162.7	1,524.7	882.3	2,407.0	10.7	63.3
May	1,036.6	1,362.6	140.0	161.5	1,524.1	889.0	2,413.0	10.6	63.2
June	1,052.5	1,373.2	136.8	157.8	1,531.1	888.0	2,419.1	10.3	63.3
July	1,058.3	1,376.4	129.9	154.7	1,531.0	893.5	2,424.5	10.1	63.1
August	1,031.8	1,360.5	134.1	160.4	1,521.0	909.0	2,430.0	10.5	62.6
September	1,049.7	1,392.4	135.2	162.8	1,555.1	880.4	2,435.5	10.5	63.9
October	1,061.9	1,399.1	118.0	145.9	1,545.0	896.1	2,441.1	9.4	63.3
November	1,064.4	1,390.5	131.0	155.2	1,545.7	901.0	2,446.7	10.0	63.2

TABLE 4 — LABOUR FORCE STATUS: SEASONALLY ADJUSTED SERIES, QUEENSLAND

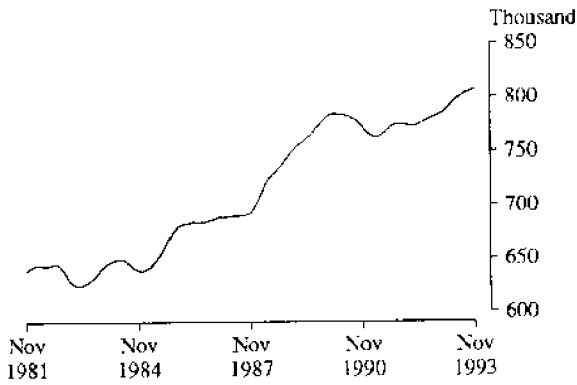
Month	Employed	Unemployed	Labour force	Unemployment rate	Participation rate
	'000	'000	'000	%	%
MALES					
1992 —					
September	780.6	98.4	878.9	11.2	74.9
October	781.4	96.9	878.3	11.0	74.7
November	780.6	103.1	883.7	11.7	75.0
December	784.4	99.6	884.0	11.3	74.9
1993 —					
January	788.2	100.7	888.9	11.3	75.1
February	788.4	104.8	893.3	11.7	75.3
March	795.1	98.9	894.0	11.1	75.2
April	791.6	97.8	889.4	11.0	74.6
May	789.7	100.2	890.0	11.3	74.5
June	805.3	99.7	905.0	11.0	75.6
July	809.5	91.5	901.0	10.2	75.1
August	799.1	101.5	900.6	11.3	74.8
September	797.4	108.8	906.2	12.0	75.1
October	809.3	96.4	905.7	10.6	74.9
November	809.2	97.3	906.5	10.7	74.8
FEMALES					
1992 —					
September	573.2	63.2	636.5	9.9	53.2
October	575.5	63.3	638.8	9.9	53.3
November	571.4	66.2	637.7	10.4	53.1
December	573.6	65.6	639.2	10.3	53.1
1993 —					
January	579.7	64.7	644.4	10.0	53.4
February	569.1	58.2	627.4	9.3	51.9
March	582.2	61.4	643.6	9.5	53.1
April	572.8	53.2	626.0	8.5	51.5
May	570.7	55.7	626.4	8.9	51.4
June	567.1	61.2	628.3	9.7	51.4
July	569.3	67.5	636.8	10.6	52.0
August	566.9	70.6	637.5	11.1	52.0
September	578.1	63.4	641.5	9.9	52.2
October	581.4	67.8	649.2	10.4	52.7
November	577.2	75.6	652.8	11.6	52.9
PERSONS					
1992 —					
September	1,353.8	161.6	1,515.4	10.7	64.0
October	1,356.9	160.3	1,517.1	10.6	63.9
November	1,352.0	169.4	1,521.4	11.1	63.9
December	1,358.0	165.2	1,523.2	10.8	63.9
1993 —					
January	1,367.9	165.4	1,533.3	10.8	64.2
February	1,357.6	163.1	1,520.6	10.7	63.5
March	1,377.3	160.3	1,537.6	10.4	64.0
April	1,364.4	151.0	1,515.4	10.0	63.0
May	1,360.4	155.9	1,516.3	10.3	62.8
June	1,372.4	160.9	1,533.3	10.5	63.4
July	1,378.8	159.0	1,537.8	10.3	63.4
August	1,365.9	172.1	1,538.1	11.2	63.3
September	1,375.5	172.2	1,547.7	11.1	63.5
October	1,390.7	164.2	1,554.9	10.6	63.7
November	1,386.4	172.9	1,559.3	11.1	63.7

TABLE 5 — LABOUR FORCE STATUS: TREND SERIES, QUEENSLAND

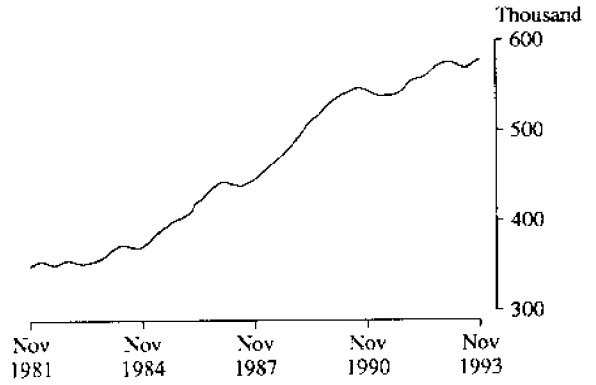
Month	Employed	Unemployed	Labour force	Unemployment rate	Participation rate
	'000	'000	'000	%	%
MALES					
1992 —					
September	780.7	99.0	879.7	11.2	75.0
October	781.8	99.4	881.2	11.3	75.0
November	783.2	100.0	883.1	11.3	75.0
December	784.7	100.7	885.4	11.4	75.0
1993 —					
January	786.5	101.4	887.9	11.4	75.0
February	788.8	101.3	890.1	11.4	75.0
March	791.6	100.3	891.9	11.2	75.0
April	794.4	99.2	893.7	11.1	75.0
May	797.1	98.6	895.7	11.0	75.0
June	799.4	98.6	898.1	11.0	75.0
July	801.4	99.1	900.5	11.0	75.0
August	803.1	99.7	902.8	11.0	75.0
September	804.6	100.1	904.6	11.1	75.0
October	806.0	100.1	906.1	11.0	75.0
November	807.1	99.8	907.0	11.0	74.9
FEMALES					
1992 —					
September	571.1	63.8	634.9	10.0	53.1
October	573.2	64.5	637.6	10.1	53.2
November	574.5	64.7	639.2	10.1	53.2
December	575.3	64.1	639.5	10.0	53.1
1993 —					
January	575.7	62.6	638.3	9.8	52.9
February	575.6	60.3	635.9	9.5	52.6
March	574.6	58.5	633.1	9.2	52.2
April	572.9	58.0	630.9	9.2	51.9
May	571.0	58.9	629.9	9.3	51.7
June	569.9	61.0	630.9	9.7	51.7
July	570.4	63.7	634.1	10.0	51.8
August	571.9	66.2	638.2	10.4	52.0
September	574.2	68.4	642.7	10.6	52.3
October	576.6	70.4	647.0	10.9	52.5
November	578.7	71.8	650.6	11.0	52.7
PERSONS					
1992 —					
September	1,351.8	162.7	1,514.5	10.7	63.9
October	1,355.0	163.8	1,518.8	10.8	64.0
November	1,357.7	164.6	1,522.3	10.8	64.0
December	1,360.0	164.9	1,524.9	10.8	64.0
1993 —					
January	1,362.2	164.0	1,526.2	10.7	63.9
February	1,364.4	161.6	1,526.0	10.6	63.7
March	1,366.2	158.8	1,525.0	10.4	63.5
April	1,367.3	157.2	1,524.5	10.3	63.3
May	1,368.1	157.5	1,525.6	10.3	63.2
June	1,369.4	159.6	1,529.0	10.4	63.2
July	1,371.8	162.8	1,534.6	10.6	63.3
August	1,375.1	166.0	1,541.0	10.8	63.4
September	1,378.8	168.5	1,547.3	10.9	63.5
October	1,382.6	170.5	1,553.1	11.0	63.6
November	1,385.9	171.7	1,557.6	11.0	63.7

DIAGRAM 4 - LABOUR FORCE STATUS: TREND SERIES, QUEENSLAND, NOVEMBER 1981 TO NOVEMBER 1993

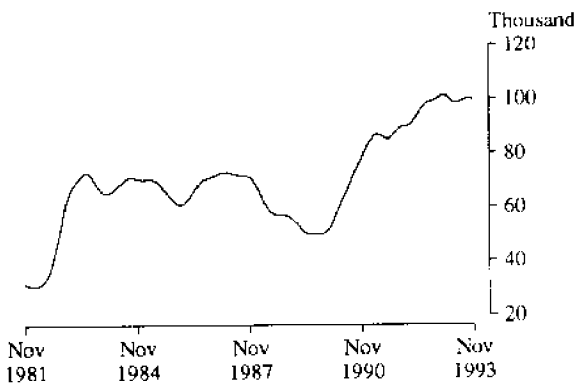
EMPLOYED MALES



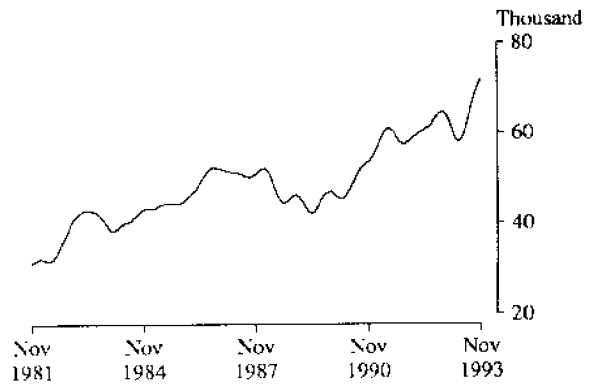
EMPLOYED FEMALES



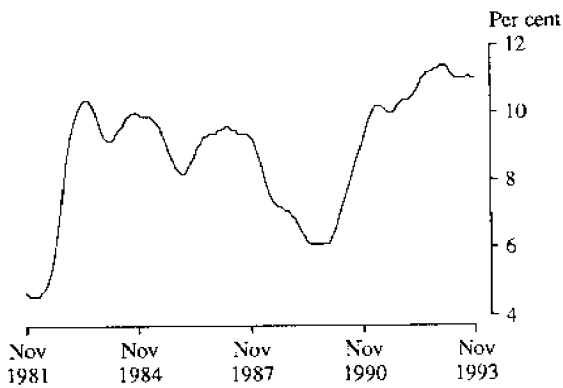
UNEMPLOYED MALES



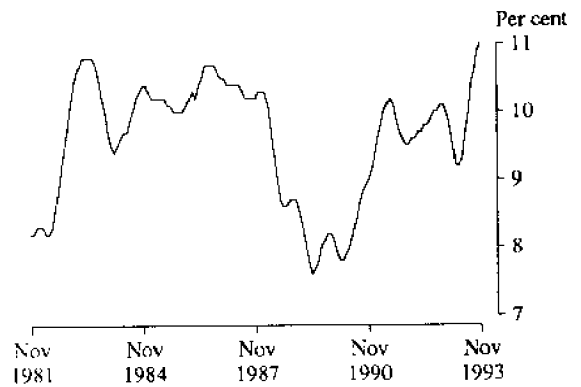
UNEMPLOYED FEMALES



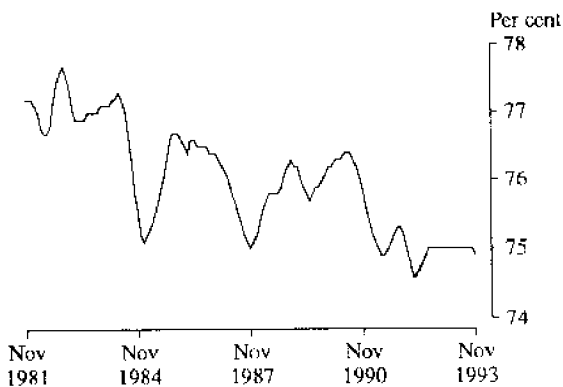
MALE UNEMPLOYMENT RATE



FEMALE UNEMPLOYMENT RATE



MALE PARTICIPATION RATE



FEMALE PARTICIPATION RATE

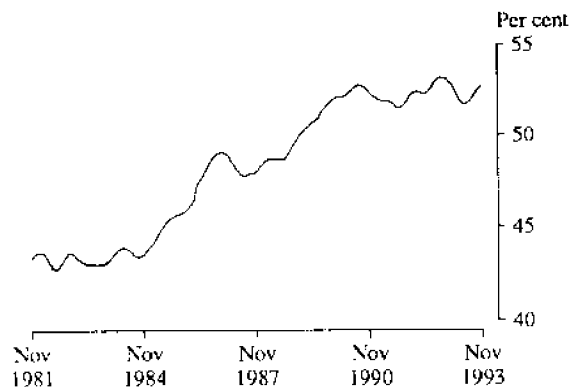


TABLE 6 — LABOUR FORCE STATUS: STATISTICAL REGIONS, QUEENSLAND, SEPTEMBER 1993

Region	Employed			Unemployed	Labour force	Not in labour force	Unemployment rate	Participation rate
	Full-time	Part-time	Total					
	'000	'000	'000	'000	'000	'000	%	%
MALES								
<i>Brisbane</i>	336.4	41.7	378.1	39.2	417.3	135.6	9.4	75.5
Brisbane City Inner Ring	87.0	13.4	100.4	11.0	111.4	38.6	9.8	74.2
Brisbane City Outer Ring	100.1	13.3	113.4	7.7	121.0	42.4	6.3	74.0
South and East BSD Balance	55.0	5.6	60.6	9.0	69.6	20.5	12.9	77.2
North and West BSD Balance	94.3	9.4	103.7	11.5	115.3	34.0	10.0	77.2
<i>Balance of Queensland</i>	384.5	43.5	428.0	60.7	488.8	164.3	12.4	74.8
South and East Moreton	56.8	9.4	66.3	12.1	78.4	32.4	15.5	70.8
North and West Moreton	55.2	7.0	62.2	11.8	74.0	23.0	16.0	76.3
Wide Bay-Burnett	39.0	4.4	43.4	9.0	52.4	24.5	17.2	68.1
Darling Downs and South-West	55.2	4.3	59.5	6.1	65.6	21.6	9.3	75.2
Mackay, Fitzroy and Central-West	69.4	6.6	76.0	9.3	85.3	25.9	10.9	76.7
Northern and North-West	52.8	5.2	58.0	3.9	61.9	18.6	6.3	76.9
Far North	56.1	6.6	62.7	8.5	71.2	18.3	11.9	79.6
Queensland	720.9	85.2	806.1	99.9	906.0	299.9	11.0	75.1
FEMALES								
<i>Brisbane</i>	164.9	119.6	284.6	25.9	310.5	272.0	8.4	53.3
Brisbane City Inner Ring	47.9	28.9	76.8	7.8	84.6	78.4	9.2	51.9
Brisbane City Outer Ring	48.5	37.3	85.8	5.6	91.3	82.9	6.1	52.4
South and East BSD Balance	24.5	20.6	45.1	6.6	51.7	43.3	12.8	54.4
North and West BSD Balance	44.0	32.9	76.9	5.9	82.8	67.4	7.2	55.1
<i>Balance of Queensland</i>	163.8	137.8	301.6	36.9	338.6	308.5	10.9	52.3
South and East Moreton	26.7	27.1	53.9	7.7	61.5	54.0	12.5	53.3
North and West Moreton	21.3	20.2	41.5	7.6	49.1	42.9	15.4	53.4
Wide Bay-Burnett	16.0	15.9	31.9	4.6	36.6	40.9	12.6	47.2
Darling Downs and South-West	25.6	18.2	43.8	3.1	46.9	41.0	6.6	53.4
Mackay, Fitzroy and Central-West	26.3	24.4	50.7	4.4	55.1	57.2	8.0	49.1
Northern and North-West	20.8	14.7	35.5	4.9	40.4	38.5	12.0	51.2
Far North	27.0	17.3	44.3	4.6	48.9	33.9	9.5	59.0
Queensland	328.8	257.5	586.2	62.9	649.1	580.5	9.7	52.8
PERSONS								
<i>Brisbane</i>	501.4	161.3	662.7	65.1	727.8	407.7	8.9	64.1
Brisbane City Inner Ring	134.9	42.3	177.3	18.7	196.0	117.0	9.6	62.6
Brisbane City Outer Ring	148.6	50.6	199.1	13.2	212.4	125.3	6.2	62.9
South and East BSD Balance	79.5	26.2	105.7	15.6	121.3	63.9	12.9	65.5
North and West BSD Balance	138.3	42.3	180.6	17.5	198.1	101.4	8.8	66.1
<i>Balance of Queensland</i>	548.3	181.3	729.7	97.7	827.3	472.7	11.8	63.6
South and East Moreton	83.6	36.6	120.1	19.8	140.0	86.4	14.2	61.8
North and West Moreton	76.4	27.3	103.7	19.4	123.1	65.9	15.8	65.1
Wide Bay-Burnett	55.0	20.3	75.3	13.6	88.9	65.5	15.3	57.6
Darling Downs and South-West	80.8	22.5	103.3	9.2	112.5	62.6	8.2	64.2
Mackay, Fitzroy and Central-West	95.8	31.0	126.8	13.7	140.5	83.0	9.7	62.8
Northern and North-West	73.6	19.8	93.5	8.8	102.3	57.1	8.6	64.2
Far North	83.1	23.9	107.0	13.1	120.1	52.2	10.9	69.7
Queensland	1,049.7	342.7	1,392.4	162.8	1,555.1	880.4	10.5	63.9

TABLE 7 — LABOUR FORCE STATUS: STATISTICAL REGIONS, QUEENSLAND, OCTOBER 1993

Region	Employed			Unemployed	Labour force	Not in labour force	Unemployment rate	Participation rate
	Full-time	Part-time	Total					
	'000	'000	'000					
MALES								
<i>Brisbane</i>	337.3	40.4	377.7	38.0	415.7	138.5	9.1	75.0
Brisbane City Inner Ring	84.9	11.7	96.5	10.7	107.2	42.2	10.0	71.8
Brisbane City Outer Ring	99.5	12.4	112.0	9.5	121.5	42.2	7.9	74.2
South and East BSD Balance	57.9	6.2	64.2	8.5	72.7	19.2	11.8	79.1
North and West BSD Balance	95.0	10.0	105.1	9.3	114.3	34.8	8.1	76.7
<i>Balance of Queensland</i>	391.8	46.2	438.1	47.7	485.8	168.9	9.8	74.2
South and East Moreton	61.7	12.3	74.0	11.4	85.4	32.5	13.3	72.5
North and West Moreton	51.2	7.3	58.5	7.6	66.1	26.8	11.5	71.2
Wide Bay-Burnett	41.3	5.0	46.3	7.0	53.2	22.4	13.1	70.4
Darling Downs and South-West	58.9	4.9	63.8	5.1	68.9	20.8	7.4	76.9
Mackay, Fitzroy and Central-West	69.5	5.9	75.5	7.8	83.2	28.7	9.4	74.4
Northern and North-West	52.1	6.3	58.4	3.0	61.4	18.2	4.8	77.1
Far North	57.2	4.4	61.6	5.9	67.5	19.4	8.7	77.6
Queensland	729.2	86.6	815.8	85.7	901.5	307.3	9.5	74.6
FEMALES								
<i>Brisbane</i>	165.4	115.9	281.3	28.3	309.6	274.1	9.1	53.0
Brisbane City Inner Ring	47.6	27.3	74.9	7.6	82.5	79.2	9.2	51.0
Brisbane City Outer Ring	48.7	37.6	86.3	5.4	91.7	81.8	5.9	52.9
South and East BSD Balance	22.3	19.5	41.8	6.5	48.4	44.6	13.5	52.0
North and West BSD Balance	46.8	31.5	78.3	8.8	87.1	68.4	10.1	56.0
<i>Balance of Queensland</i>	167.3	134.7	302.0	31.9	333.9	314.7	9.5	51.5
South and East Moreton	29.3	24.4	53.7	7.2	60.9	55.5	11.8	52.3
North and West Moreton	19.6	23.2	42.7	6.4	49.2	42.6	13.1	53.6
Wide Bay-Burnett	19.1	15.0	34.1	3.6	37.8	43.0	9.6	46.7
Darling Downs and South-West	26.3	19.8	46.2	* 2.7	48.9	41.4	* 5.6	54.2
Mackay, Fitzroy and Central-West	24.4	22.0	46.4	4.4	50.9	59.7	8.7	46.0
Northern and North-West	22.6	12.8	35.4	4.4	39.8	36.7	11.1	52.0
Far North	26.0	17.5	43.5	* 3.0	46.5	35.8	* 6.5	56.5
Queensland	332.7	250.6	583.3	60.2	643.5	588.8	9.4	52.2
PERSONS								
<i>Brisbane</i>	502.7	156.3	659.0	66.3	725.3	412.5	9.1	63.7
Brisbane City Inner Ring	132.5	38.9	171.4	18.3	189.7	121.4	9.6	61.0
Brisbane City Outer Ring	148.2	50.0	198.2	15.0	213.2	124.1	7.0	63.2
South and East BSD Balance	80.2	25.8	106.0	15.1	121.1	63.8	12.5	65.5
North and West BSD Balance	141.8	41.6	183.4	18.0	201.4	103.2	8.9	66.1
<i>Balance of Queensland</i>	559.1	181.0	740.1	79.6	819.7	483.6	9.7	62.9
South and East Moreton	91.0	36.8	127.7	18.6	146.3	88.0	12.7	62.4
North and West Moreton	70.7	30.5	101.2	14.0	115.3	69.3	12.2	62.4
Wide Bay-Burnett	60.3	20.1	80.4	10.6	91.0	65.5	11.6	58.2
Darling Downs and South-West	85.2	24.7	110.0	7.8	117.8	62.1	6.7	65.5
Mackay, Fitzroy and Central-West	94.0	27.9	121.9	12.2	134.1	88.4	9.1	60.3
Northern and North-West	74.7	19.1	93.8	7.4	101.2	55.0	7.3	64.8
Far North	83.1	21.9	105.0	8.9	114.0	55.2	7.8	67.4
Queensland	1,061.9	337.2	1,399.1	145.9	1,545.0	896.1	9.4	63.3

TABLE 8 — LABOUR FORCE STATUS: STATISTICAL REGIONS, QUEENSLAND, NOVEMBER 1993

Region	Employed			Unemployed	Labour force	Not in labour force	Unemployment rate	Participation rate
	Full-time	Part-time	Total					
	'000	'000	'000					
MALES								
<i>Brisbane</i>	334.0	37.8	371.8	39.1	410.9	144.5	9.5	74.0
Brisbane City Inner Ring	81.7	12.1	93.8	10.5	104.3	45.5	10.1	69.6
Brisbane City Outer Ring	103.3	11.3	114.6	10.1	124.7	44.2	8.1	73.8
South and East BSD Balance	57.5	6.8	64.3	7.4	71.7	20.9	10.3	77.4
North and West BSD Balance	91.4	7.7	99.1	11.1	110.2	33.9	10.1	76.5
<i>Balance of Queensland</i>	397.4	41.0	438.4	49.1	487.5	168.8	10.1	74.3
South and East Moreton	63.1	9.4	72.5	11.0	83.5	32.3	13.1	72.1
North and West Moreton	51.7	6.2	57.9	7.3	65.2	27.8	11.3	70.1
Wide Bay-Burnett	44.7	5.4	50.1	6.7	56.8	24.5	11.8	69.9
Darling Downs and South-West	59.7	6.2	65.9	5.3	71.2	19.5	7.5	78.5
Mackay, Fitzroy and Central-West	72.2	5.1	77.4	8.0	85.4	30.6	9.3	73.6
Northern and North-West	48.3	4.7	53.0	3.8	56.8	17.5	6.6	76.5
Far North	57.7	4.0	61.6	7.0	68.6	16.6	10.1	80.5
Queensland	731.4	78.9	810.2	88.1	898.4	313.3	9.8	74.1
FEMALES								
<i>Brisbane</i>	162.6	118.1	280.7	30.1	310.8	274.0	9.7	53.2
Brisbane City Inner Ring	46.7	27.9	74.6	7.4	82.0	78.7	9.1	51.0
Brisbane City Outer Ring	48.9	41.1	90.0	6.9	96.9	80.3	7.1	54.7
South and East BSD Balance	23.6	21.1	44.7	6.4	51.1	44.3	12.4	53.6
North and West BSD Balance	43.4	28.0	71.4	9.4	80.9	70.6	11.7	53.4
<i>Balance of Queensland</i>	170.4	129.1	299.5	37.0	336.5	313.7	11.0	51.8
South and East Moreton	33.4	22.5	55.9	7.9	63.8	53.9	12.3	54.2
North and West Moreton	19.8	22.4	42.2	8.1	50.2	43.3	16.1	53.7
Wide Bay-Burnett	19.2	16.6	35.7	4.3	40.0	47.0	10.7	46.0
Darling Downs and South-West	23.9	17.3	41.2	3.1	44.3	43.1	7.1	50.7
Mackay, Fitzroy and Central-West	25.5	22.1	47.6	6.0	53.6	56.0	11.2	48.9
Northern and North-West	22.4	13.4	35.7	4.3	40.1	36.3	10.8	52.5
Far North	26.3	14.9	41.2	* 3.2	44.4	34.2	* 7.3	56.5
Queensland	333.1	247.2	580.3	67.1	647.4	587.7	10.4	52.4
PERSONS								
<i>Brisbane</i>	496.6	156.0	652.6	69.2	721.7	418.5	9.6	63.3
Brisbane City Inner Ring	128.4	40.0	168.4	17.9	186.3	124.3	9.6	60.0
Brisbane City Outer Ring	152.2	52.4	204.6	17.0	221.6	124.5	7.7	64.0
South and East BSD Balance	81.1	27.9	109.0	13.7	122.8	65.2	11.2	65.3
North and West BSD Balance	134.9	35.7	170.5	20.5	191.1	104.5	10.8	64.6
<i>Balance of Queensland</i>	567.8	170.1	738.0	86.0	824.0	482.5	10.4	63.1
South and East Moreton	96.4	32.0	128.4	18.8	147.3	86.2	12.8	63.1
North and West Moreton	71.5	28.5	100.0	15.4	115.4	71.1	13.4	61.9
Wide Bay-Burnett	63.9	21.9	85.8	11.0	96.9	71.5	11.4	57.5
Darling Downs and South-West	83.6	23.5	107.1	8.4	115.6	62.6	7.3	64.9
Mackay, Fitzroy and Central-West	97.8	27.2	125.0	14.0	139.0	86.5	10.1	61.6
Northern and North-West	70.7	18.1	88.8	8.1	96.9	53.7	8.4	64.3
Far North	84.0	18.8	102.8	10.2	113.0	50.7	9.0	69.0
Queensland	1,064.4	326.1	1,390.5	155.2	1,545.7	901.0	10.0	63.2

TABLE 9 — LABOUR FORCE STATUS: AGE BY STATISTICAL REGION, QUEENSLAND, NOVEMBER 1993

Age group (years)	Employed			Unemployed '000	Labour force '000	Not in labour force '000	Unem- ployment rate %	Partici- pation rate %
	Full-time	Part-time	Total					
	'000	'000	'000					
BRISBANE CITY INNER RING								
15-24	26.7	16.1	42.9	7.1	49.9	19.7	14.1	71.7
15-19	2.8	6.7	9.5	2.6	12.0	10.9	21.4	52.4
20-24	24.0	9.4	33.4	4.5	37.9	8.8	11.8	81.1
25-44	69.1	16.1	85.2	7.5	92.7	20.0	8.1	82.3
45 and over	32.5	7.8	40.4	3.4	43.7	84.5	7.7	34.1
Total	128.4	40.0	168.4	17.9	186.3	124.3	9.6	60.0
BRISBANE CITY OUTER RING								
15-24	26.1	17.9	44.0	6.2	50.2	22.4	12.3	69.1
15-19	6.1	12.6	18.7	4.2	22.9	16.5	18.2	58.1
20-24	20.0	5.3	25.3	* 2.0	27.3	5.9	* 7.3	82.2
25-44	78.2	17.7	96.0	8.1	104.0	25.0	7.8	80.6
45 and over	47.8	16.8	64.6	2.8	67.4	77.1	4.1	46.6
Total	152.2	52.4	204.6	17.0	221.6	124.5	7.7	64.0
SOUTH AND EAST BSD BALANCE								
15-24	14.2	8.9	23.1	5.3	28.4	15.1	18.6	65.2
15-19	4.6	5.6	10.1	* 2.4	12.5	11.2	* 19.0	52.8
20-24	9.6	3.3	12.9	2.9	15.8	4.0	18.3	80.0
25-44	42.4	12.1	54.6	6.8	61.3	19.9	11.0	75.5
45 and over	24.6	6.8	31.4	* 1.7	33.1	30.1	* 5.1	52.3
Total	81.1	27.9	109.0	13.7	122.8	65.2	11.2	65.3
NORTH AND WEST BSD BALANCE								
15-24	25.8	10.2	36.0	7.9	43.9	15.8	17.9	73.5
15-19	8.6	6.7	15.4	4.7	20.1	10.4	23.5	65.8
20-24	17.2	3.5	20.7	3.2	23.8	5.4	13.3	81.5
25-44	74.6	16.1	90.7	8.9	99.6	23.0	8.9	81.2
45 and over	34.5	9.3	43.8	3.8	47.6	65.6	8.0	42.0
Total	134.9	35.7	170.5	20.5	191.1	104.5	10.8	64.6
BRISBANE MAJOR STATISTICAL REGION								
15-24	92.9	53.1	146.0	26.4	172.4	73.1	15.3	70.2
15-19	22.1	31.6	53.7	13.8	67.5	49.0	20.5	57.9
20-24	70.8	21.5	92.3	12.5	104.9	24.1	12.0	81.3
25-44	264.3	62.1	326.4	31.2	357.6	88.0	8.7	80.3
45 and over	139.5	40.7	180.2	11.6	191.8	257.4	6.1	42.7
Total	496.6	156.0	652.6	69.2	721.7	418.5	9.6	63.3
SOUTH AND EAST MORETON								
15-24	20.2	7.8	28.1	5.3	33.3	8.7	15.8	79.3
15-19	5.8	5.2	11.0	2.5	13.5	5.5	18.3	71.0
20-24	14.5	2.6	17.0	2.8	19.8	3.2	14.2	86.2
25-44	47.5	14.5	61.9	8.4	70.4	14.1	12.0	83.3
45 and over	28.7	9.7	38.4	5.1	43.6	63.4	11.8	40.7
Total	96.4	32.0	128.4	18.8	147.3	86.2	12.8	63.1
NORTH AND WEST MORETON								
15-24	11.9	7.0	18.9	4.1	23.0	8.0	17.7	74.2
15-19	3.4	4.2	7.5	* 1.9	9.5	6.1	* 20.3	60.8
20-24	8.5	2.8	11.4	* 2.2	13.5	* 1.9	* 15.9	87.7
25-44	39.1	12.2	51.4	7.5	58.9	16.1	12.7	78.5
45 and over	20.5	9.3	29.7	3.9	33.6	47.0	11.5	41.7
Total	71.5	28.5	100.0	15.4	115.4	71.1	13.4	61.9
WIDE BAY-BURNETT								
15-24	13.2	4.9	18.1	3.8	21.8	8.3	17.3	72.4
15-19	4.1	3.2	7.3	* 2.4	9.7	6.3	* 24.8	60.7
20-24	9.1	* 1.7	10.8	* 1.4	12.1	* 2.0	* 11.3	85.7
25-44	33.9	10.0	43.8	4.7	48.5	14.6	9.7	76.9
45 and over	16.9	7.1	23.9	* 2.6	26.5	48.6	* 9.6	35.3
Total	63.9	21.9	85.8	11.0	96.9	71.5	11.4	57.5

TABLE 9 — LABOUR FORCE STATUS: AGE BY STATISTICAL REGION, QUEENSLAND, NOVEMBER 1993—continued

Age group (years)	Employed			Unemployed '000	Labour force '000	Not in labour force '000	Unem- ployment rate %	Partici- pation rate %
	Full-time '000	Part-time '000	Total '000					
DARLING DOWNS AND SOUTH-WEST								
15-24	16.6	6.0	22.6	4.1	26.7	12.7	15.3	67.8
15-19	5.3	3.5	8.8	* 2.1	10.9	8.0	* 19.5	57.8
20-24	11.3	* 2.5	13.8	* 1.9	15.7	4.7	* 12.3	77.1
25-44	42.5	10.6	53.1	* 2.8	55.8	12.9	* 4.9	81.3
45 and over	24.5	6.9	31.4	* 1.6	33.0	37.1	* 4.9	47.1
Total	83.6	23.5	107.1	8.4	115.6	62.6	7.3	64.9
MACKAY, FITZROY AND CENTRAL-WEST								
15-24	17.4	6.8	24.1	5.4	29.6	17.8	18.3	62.5
15-19	3.7	5.4	9.1	* 2.7	11.8	9.9	* 23.1	54.3
20-24	13.7	* 1.4	15.1	* 2.7	17.7	7.8	* 15.1	69.4
25-44	53.1	13.4	66.5	6.8	73.3	20.1	9.3	78.5
45 and over	27.3	7.1	34.4	* 1.8	36.2	48.7	* 4.9	42.6
Total	97.8	27.2	125.0	14.0	139.0	86.5	10.1	61.6
NORTHERN AND NORTH-WEST								
15-24	13.7	5.0	18.8	3.9	22.6	12.1	17.0	65.1
15-19	2.8	3.6	6.4	* 1.4	7.8	8.4	* 17.7	48.0
20-24	10.9	* 1.4	12.4	* 2.5	14.8	3.7	* 16.7	80.1
25-44	32.5	7.7	40.2	2.6	42.9	12.9	6.2	76.9
45 and over	24.5	5.3	29.8	* 1.6	31.4	28.7	* 5.1	52.2
Total	70.7	18.1	88.8	8.1	96.9	53.7	8.4	64.3
FAR NORTH								
15-24	13.4	4.4	17.8	4.1	21.8	10.4	18.6	67.8
15-19	4.2	* 2.7	6.9	* 1.2	8.1	6.8	* 15.0	54.6
20-24	9.2	* 1.7	10.9	* 2.8	13.7	3.6	* 20.7	79.2
25-44	49.6	10.5	60.2	5.5	65.7	12.8	8.4	83.7
45 and over	21.0	3.9	24.9	* 0.6	25.5	27.6	* 2.4	48.0
Total	84.0	18.8	102.8	10.2	113.0	50.7	9.0	69.0
BALANCE OF QUEENSLAND								
15-24	106.4	41.9	148.3	30.5	178.8	77.9	17.1	69.7
15-19	29.2	27.8	57.0	14.3	71.3	51.0	20.0	58.3
20-24	77.2	14.1	91.3	16.3	107.5	26.9	15.1	80.0
25-44	298.1	78.9	377.0	38.4	415.4	103.5	9.2	80.1
45 and over	163.4	49.2	212.6	17.2	229.8	301.1	7.5	43.3
Total	567.8	170.1	738.0	86.0	824.0	482.5	10.4	63.1
QUEENSLAND								
15-24	199.3	95.1	294.3	56.9	351.2	151.0	16.2	69.9
15-19	51.3	59.4	110.7	28.1	138.8	100.0	20.2	58.1
20-24	147.9	35.7	183.6	28.8	212.4	51.0	13.6	80.6
25-44	562.4	141.0	703.4	69.6	773.0	191.4	9.0	80.2
45 and over	302.8	90.0	392.8	28.8	421.6	558.5	6.8	43.0
Total	1,064.4	326.1	1,390.5	155.2	1,545.7	901.0	10.0	63.2

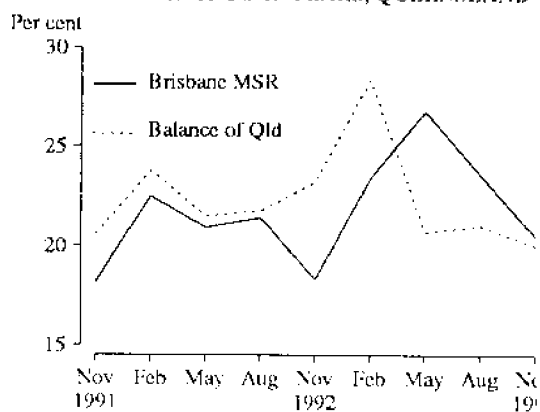
DIAGRAM 5 - YOUTH UNEMPLOYMENT RATE:
PERSONS AGED 15 TO 19 YEARS, QUEENSLAND

TABLE 10 — LABOUR FORCE STATUS: PERSONS AGED 15 TO 19 YEARS BY FULL-TIME ATTENDANCE AT AN EDUCATIONAL INSTITUTION, QUEENSLAND, NOVEMBER 1993

Sex	Employed			Unemployed	Labour force	Not in labour force	Civilian population aged 15 to 19 years	Unemployment rate	Participation rate
	Full-time	Part-time	Total						
	'000	'000	'000	'000	'000	'000	'000	%	%
ATTENDING NEITHER SCHOOL NOR A TERTIARY EDUCATIONAL INSTITUTION FULL-TIME									
Males	33.3	5.2	38.5	8.2	46.7	* 2.3	49.0	17.5	95.3
Females	16.9	9.1	25.9	8.9	34.8	4.6	39.4	25.6	88.4
Persons	50.2	14.3	64.4	17.1	81.5	6.9	88.4	21.0	92.2
ATTENDING A TERTIARY EDUCATIONAL INSTITUTION FULL-TIME									
Males	* 0.7	4.4	5.1	* 0.5	5.6	9.2	14.8	* 8.3	37.5
Females	* 0.2	7.2	7.5	* 1.3	8.8	7.7	16.4	* 14.7	53.3
Persons	* 0.9	11.7	12.6	* 1.7	14.3	16.9	31.3	* 12.2	45.8
ATTENDING SCHOOL									
Males	* 0.3	13.6	13.9	4.6	18.5	39.6	58.1	25.1	31.9
Females	* —	19.8	19.8	4.6	24.4	36.6	61.0	18.8	40.0
Persons	* 0.3	33.5	33.7	9.2	43.0	76.2	119.1	21.5	36.1
TOTAL									
Males	34.2	23.2	57.5	13.3	70.8	51.1	121.9	18.8	58.0
Females	17.1	36.2	53.2	14.8	68.0	48.9	116.9	21.7	58.2
Persons	51.3	59.4	110.7	28.1	138.8	100.0	238.8	20.2	58.1

TABLE 11 — LABOUR FORCE STATUS: PERSONS AGED 20 TO 24 YEARS BY FULL-TIME ATTENDANCE AT A TERTIARY INSTITUTION, QUEENSLAND, NOVEMBER 1993

Sex	Employed			Unemployed	Labour force	Not in labour force	Civilian population aged 20 to 24 years	Unemployment rate	Participation rate
	Full-time	Part-time	Total						
	'000	'000	'000	'000	'000	'000	'000	%	%
NOT ATTENDING A TERTIARY EDUCATIONAL INSTITUTION FULL-TIME									
Males	86.8	8.8	95.6	15.8	111.4	5.2	116.6	14.2	95.5
Females	59.8	15.0	74.7	10.8	85.6	24.7	110.3	12.6	77.6
Persons	146.6	23.7	170.3	26.6	196.9	30.0	226.9	13.5	86.8
ATTENDING A TERTIARY EDUCATIONAL INSTITUTION FULL-TIME									
Males	* 0.6	5.2	5.8	* 0.4	6.2	10.4	16.6	* 7.0	37.4
Females	* 0.8	6.7	7.5	* 1.7	9.3	10.6	19.9	* 18.9	46.5
Persons	* 1.4	11.9	13.3	* 2.2	15.5	21.1	36.5	* 14.1	42.4
TOTAL									
Males	87.3	14.0	101.4	16.2	117.6	15.7	133.2	13.8	88.2
Females	60.6	21.6	82.2	12.6	94.8	35.4	130.2	13.3	72.8
Persons	147.9	35.7	183.6	28.8	212.4	51.0	263.4	13.6	80.6

TABLE 12 — EMPLOYED PERSONS: FULL-TIME OR PART-TIME STATUS, QUEENSLAND

Month	Females									
	Males		Married		Not married		Total		Persons	
	Full-time	Part-time	Full-time	Part-time	Full-time	Part-time	Full-time	Part-time	Full-time	Part-time
'000										
1992 —										
September	703.6	85.3	186.9	172.3	134.7	87.5	321.6	259.8	1,025.1	345.1
October	704.6	82.9	184.9	166.2	138.7	87.4	323.6	253.6	1,028.2	336.5
November	704.4	77.3	186.9	165.4	133.1	89.4	320.0	254.8	1,024.3	332.1
December	717.1	79.7	188.0	163.9	144.9	81.2	332.9	245.2	1,050.0	324.9
1993 —										
January	699.6	81.6	192.6	146.1	147.4	76.4	340.0	222.5	1,039.6	304.1
February	702.8	80.9	193.8	153.7	136.4	78.3	330.2	232.0	1,033.0	312.9
March	708.7	84.0	202.6	159.0	139.6	79.7	342.2	238.7	1,050.9	322.7
April	709.0	77.9	190.2	166.3	139.8	78.8	330.0	245.1	1,039.0	323.0
May	710.1	78.2	195.1	165.7	131.3	82.1	326.4	247.7	1,036.6	326.0
June	721.7	80.1	196.6	161.7	134.2	78.9	330.9	240.6	1,052.5	320.7
July	723.9	84.4	198.2	163.0	136.1	70.7	334.3	233.8	1,058.3	318.1
August	711.3	83.9	190.5	166.6	130.0	78.3	320.5	244.8	1,031.8	328.8
September	720.9	85.2	194.4	172.5	134.3	84.9	328.8	257.5	1,049.7	342.7
October	729.2	86.6	196.5	164.0	136.2	86.7	332.7	250.6	1,061.9	337.2
November	731.4	78.9	194.0	166.4	139.0	80.9	333.1	247.2	1,064.4	326.1
PER CENT (a)										
1992 —										
September	89.2	10.8	52.0	48.0	60.6	39.4	55.3	44.7	74.8	25.2
October	89.5	10.5	52.7	47.3	61.3	38.7	56.1	43.9	75.3	24.7
November	90.1	9.9	53.0	47.0	59.8	40.2	55.7	44.3	75.5	24.5
December	90.0	10.0	53.4	46.6	64.1	35.9	57.6	42.4	76.4	23.6
1993 —										
January	89.5	10.5	56.9	43.1	65.9	34.1	60.4	39.6	77.4	22.6
February	89.7	10.3	55.8	44.2	63.5	36.5	58.7	41.3	76.8	23.2
March	89.4	10.6	56.0	44.0	63.7	36.3	58.9	41.1	76.5	23.5
April	90.1	9.9	53.4	46.6	63.9	36.1	57.4	42.6	76.3	23.7
May	90.1	9.9	54.1	45.9	61.5	38.5	56.9	43.1	76.1	23.9
June	90.0	10.0	54.9	45.1	63.0	37.0	57.9	42.1	76.6	23.4
July	89.6	10.4	54.9	45.1	65.8	34.2	58.9	41.1	76.9	23.1
August	89.4	10.6	53.3	46.7	62.4	37.6	56.7	43.3	75.8	24.2
September	89.4	10.6	53.0	47.0	61.3	38.7	56.1	43.9	75.4	24.6
October	89.4	10.6	54.5	45.5	61.1	38.9	57.0	43.0	75.9	24.1
November	90.3	9.7	53.8	46.2	63.2	36.8	57.4	42.6	76.6	23.4

(a) Full-time and part-time as a proportion of employed persons in each category.

TABLE 13 — EMPLOYED PERSONS: AVERAGE HOURS WORKED BY STATUS OF WORKER, INDUSTRY AND OCCUPATION, QUEENSLAND, NOVEMBER 1993

Status of worker, industry division and occupation group	Females				Persons
	Males	Married	Not married	Total	
Status of worker					
Employers	56.0	32.5	59.5	35.0	49.7
Self-employed	48.3	30.0	30.2	30.1	42.1
Wage and salary earners	40.0	30.3	30.3	30.3	35.8
Unpaid family helpers	16.9	18.8	8.9	15.7	16.2
Industry division					
Agriculture, forestry, fishing and hunting	51.7	31.2	21.9	30.1	45.5
Mining	46.5	* 14.5	* 40.0	* 22.7	45.6
Manufacturing	41.6	31.1	36.6	33.2	39.5
Electricity, gas and water	36.9	* 23.6	* 0.0	* 23.6	36.5
Construction	42.5	19.8	37.3	21.7	39.4
Wholesale and retail trade	40.5	31.9	23.3	28.2	35.0
Wholesale trade	42.9	35.3	32.8	34.6	40.8
Retail trade	39.2	31.1	22.2	27.0	32.8
Transport and storage	44.4	28.2	34.5	30.2	41.3
Communication	38.9	34.7	* 33.7	34.4	37.9
Finance, property and business services	42.4	30.9	37.8	33.7	38.1
Public administration and defence	37.2	30.3	33.7	31.7	35.3
Community services	39.9	30.3	32.4	31.0	33.9
Recreation, personal and other services	38.7	29.2	28.2	28.7	32.8
Occupation group					
Managers and administrators	53.9	40.7	48.1	41.6	51.0
Professionals	44.4	33.7	37.1	35.0	40.0
Para-professionals	39.5	30.7	32.0	31.3	35.9
Tradespersons	41.8	34.8	39.2	36.6	41.4
Clerks	35.2	27.3	34.1	29.6	30.8
Salespersons and personal service workers	38.9	30.1	24.2	27.3	31.6
Plant and machine operators and drivers	44.1	32.0	34.8	33.2	42.7
Labourers and related workers	35.2	26.4	25.3	26.0	31.9
Full-time workers	44.8	42.0	39.6	41.0	43.6
Part-time workers	15.3	16.4	14.3	15.7	15.6
Total	41.9	30.2	30.3	30.2	37.0

DIAGRAM 6 - FEMALES AS A PROPORTION OF TOTAL EMPLOYED BY SELECTED INDUSTRY DIVISION, QUEENSLAND

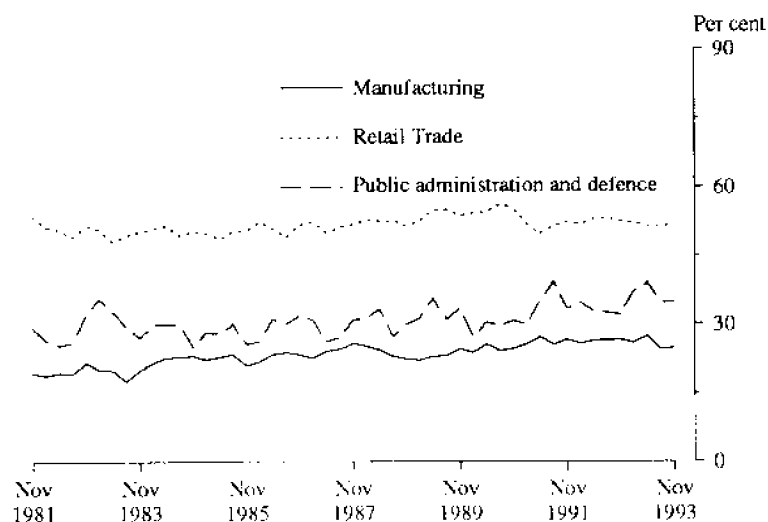


TABLE 14 — EMPLOYED PERSONS: STATUS OF WORKER, INDUSTRY AND OCCUPATION, QUEENSLAND, NOVEMBER 1993
(*000)

Particulars	Males	Females		Total	Persons
		Married	Not married		
Status of worker					
Employers	49.4	19.5	* 1.9	21.4	70.9
Self-employed	111.4	47.5	10.0	57.4	168.9
Wage and salary earners	642.8	287.3	205.3	492.6	1,135.3
Unpaid family helpers	6.6	6.1	* 2.7	8.8	15.5
Industry division					
Agriculture, forestry, fishing and hunting	61.8	22.2	* 2.9	25.1	86.9
Mining	15.8	* 0.4	* 0.2	* 0.6	16.4
Manufacturing	131.7	26.7	16.7	43.4	175.1
Electricity, gas and water	13.4	* 0.4	* 0.0	* 0.4	13.8
Construction	106.1	16.8	* 2.1	18.8	125.0
Wholesale and retail trade	169.0	78.3	59.7	138.0	307.1
Wholesale trade	61.6	15.3	6.2	21.5	83.1
Retail trade	107.5	63.0	53.5	116.5	223.9
Transport and storage	57.2	10.9	5.1	16.0	73.2
Communication	13.2	* 2.6	* 1.3	3.9	17.0
Finance, property and business services	68.7	41.0	27.3	68.3	137.1
Public administration and defence	42.7	13.2	9.7	22.9	65.6
Community services	83.3	114.4	61.6	176.0	259.2
Recreation, personal and other services	47.3	33.4	33.4	66.8	114.1
Occupation group					
Managers and administrators	109.9	29.5	4.3	33.8	143.7
Professionals	81.7	45.0	26.8	71.8	153.5
Para-professionals	48.2	20.7	16.3	37.0	85.2
Tradespersons	190.2	8.9	6.4	15.2	205.4
Clerks	46.2	114.7	58.3	173.0	219.2
Salespersons and personal service workers	90.0	81.2	71.5	152.7	242.7
Plant and machine operators and drivers	95.4	8.0	6.3	14.2	109.6
Labourers and related workers	148.7	52.5	30.0	82.5	231.2
Total	810.2	360.4	219.9	580.3	1,390.5

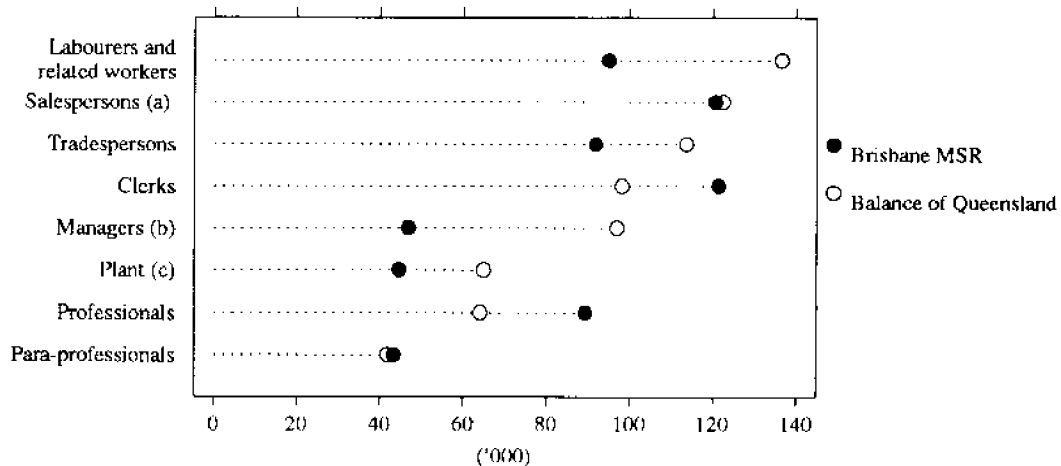
TABLE 15 — EMPLOYED PERSONS: INDUSTRY BY OCCUPATION, QUEENSLAND, NOVEMBER 1993
(*000)

Industry division	Occupation group								Total
	Managers and administrators	Professionals	Para-professionals	Tradespersons	Clerks	Salespersons and personal service workers	Plant and machine operators and drivers	Labourers and related workers	
Agriculture, forestry, fishing and hunting	52.0	* 0.2	* 1.3	* 2.7	* 1.9	* 0.7	4.1	24.0	86.9
Mining	* 0.8	* 2.0	* 0.6	* 2.9	* 0.7	* 0.2	6.6	* 2.5	16.4
Manufacturing	10.7	8.2	4.8	51.2	20.0	8.3	28.3	43.7	175.1
Electricity, gas and water	* 0.4	* 2.3	* 2.6	3.6	* 1.7	* 0.0	* 0.8	* 2.4	13.8
Construction	8.0	* 1.7	* 3.3	59.7	17.1	* 1.1	10.3	23.8	125.0
Wholesale and retail trade	38.5	7.6	4.3	43.1	33.8	133.2	10.4	36.2	307.1
Transport and storage	3.9	* 1.3	* 2.9	3.7	10.4	6.8	35.4	8.7	73.2
Communication	* 0.7	* 0.2	* 1.1	6.5	6.2	* 1.4	* 0.4	* 0.4	17.0
Finance, property and business services	7.3	24.8	7.1	* 2.0	47.5	33.1	* 1.1	14.1	137.1
Public administration and defence	* 2.6	11.5	5.6	4.4	24.3	* 1.1	6.1	10.1	65.6
Community services	6.3	88.0	46.9	7.5	46.4	22.6	4.5	37.0	259.2
Recreation, personal and other services	12.6	5.8	4.6	18.1	9.2	34.2	* 1.4	28.2	114.1
Total	143.7	153.5	85.2	205.4	219.2	242.7	109.6	231.2	1,390.5

TABLE 16 — EMPLOYED PERSONS: STATUS OF WORKER, INDUSTRY AND OCCUPATION BY STATISTICAL REGION, QUEENSLAND, NOVEMBER 1993
(*000)

Particulars	Brisbane				Total
	Brisbane City Inner Ring	Brisbane City Outer Ring	South and East BSD Balance	North and West BSD Balance	
Status of worker					
Wage and salary earners	146.6	178.8	94.6	145.6	565.6
Others	21.8	25.8	14.4	24.9	86.9
Industry division					
Agriculture, forestry, fishing and hunting	* 0.4	* 1.1	* 1.0	5.7	8.2
Mining	* 0.5	* 1.3	* 0.7	* 1.4	3.8
Manufacturing	18.9	28.7	16.3	26.8	90.8
Electricity, gas and water	* 1.2	2.6	* 0.2	* 0.8	4.9
Construction	9.2	14.3	13.2	18.4	55.0
Wholesale and retail trade	36.4	44.4	28.8	43.9	153.6
Wholesale trade	10.0	13.9	10.8	14.7	49.4
Retail trade	26.4	30.5	18.0	29.2	104.2
Transport and storage	8.1	10.3	7.1	9.4	35.0
Communication	* 2.3	3.5	* 1.1	* 2.0	8.8
Finance, property and business services	25.3	30.7	12.4	15.5	83.9
Public administration and defence	10.7	12.3	2.8	5.2	30.9
Community services	42.5	44.0	19.0	32.4	137.9
Recreation, personal and other services	12.9	11.3	6.4	9.0	39.6
Occupation group					
Managers and administrators	11.8	15.3	6.1	13.7	46.9
Professionals	36.7	29.2	8.3	15.1	89.3
Para-professionals	11.8	13.3	5.9	12.5	43.4
Tradespersons	15.4	26.3	19.6	30.5	91.9
Clerks	31.0	44.5	19.4	26.3	121.2
Salespersons and personal service workers	31.5	35.8	22.0	31.1	120.4
Plant and machine operators and drivers	8.0	13.1	9.3	14.3	44.6
Labourers and related workers	22.2	27.3	18.4	27.0	94.9
Total	168.4	204.6	109.0	170.5	652.6

DIAGRAM 7 - EMPLOYMENT BY OCCUPATION BY BRISBANE MSR AND BALANCE OF QUEENSLAND, NOVEMBER 1993



(a) Including personal service workers. (b) Including administrators.
(c) Including machine operators and drivers.

TABLE 16 — EMPLOYED PERSONS: STATUS OF WORKER, INDUSTRY AND OCCUPATION BY STATISTICAL REGION, QUEENSLAND, NOVEMBER 1993 — *continued*
(⁰⁰⁰)

Particulars	Balance of Queensland							Total	Queensland
	South and East Moreton	North and West Moreton	Wide Bay-Burnett	Darling Downs and South-West	Mackay, Fitzroy and Central-West	Northern and North-West	Far North		
Status of worker									
Wage and salary earners	99.8	70.7	63.7	77.9	106.5	72.3	78.7	569.7	1,135.3
Others	28.6	29.3	22.1	29.2	18.5	16.5	24.1	168.3	255.2
Industry division									
Agriculture, forestry, fishing and hunting	2.4	12.9	13.9	26.7	6.5	6.7	9.6	78.7	86.9
Mining	* 0.5	* 0.9	* 0.4	* 0.2	4.7	4.2	* 1.6	12.6	16.4
Manufacturing	14.4	10.7	11.3	16.0	15.8	7.2	8.8	84.3	175.1
Electricity, gas and water	* 1.1	* 0.6	* 1.0	* 0.5	* 2.6	* 2.2	* 0.9	8.9	13.8
Construction	16.3	12.6	9.0	7.4	11.4	5.0	8.3	70.0	125.0
Wholesale and retail trade	29.9	23.7	14.2	18.8	25.1	20.5	21.3	153.5	307.1
Wholesale trade	5.4	5.9	* 2.5	5.5	5.5	6.0	* 2.9	33.7	83.1
Retail trade	24.5	17.9	11.7	13.3	19.7	14.4	18.4	119.8	223.9
Transport and storage	5.7	4.3	4.4	4.5	10.0	3.6	5.7	38.2	73.2
Communication	* 1.8	* 0.7	* 0.9	* 0.6	* 1.8	* 1.6	* 0.9	8.2	17.0
Finance, property and business services	16.4	8.7	4.5	4.8	7.6	5.6	5.6	53.1	137.1
Public administration and defence	3.0	3.6	* 2.7	5.4	5.5	5.5	8.9	34.6	65.6
Community services	15.6	12.5	16.5	18.5	20.2	18.6	19.3	121.3	259.2
Recreation, personal and other services	21.3	8.7	6.9	3.6	13.7	8.3	12.0	74.5	114.1
Occupation group									
Managers and administrators	13.1	15.4	12.4	22.1	12.4	10.1	11.3	96.8	143.7
Professionals	11.0	6.1	5.6	8.4	14.6	10.1	8.5	64.2	153.5
Para-professionals	4.9	5.0	5.4	4.6	8.3	6.7	6.9	41.8	85.2
Tradespersons	22.5	15.5	13.1	13.2	19.0	12.5	17.8	113.5	205.4
Clerks	18.8	15.2	11.8	12.7	14.0	12.9	12.7	98.1	219.2
Salespersons and personal service workers	31.3	17.6	15.1	11.8	16.7	13.5	16.4	122.3	242.7
Plant and machine operators and drivers	9.3	7.6	7.3	7.4	14.5	7.2	11.6	64.9	109.6
Labourers and related workers	17.6	17.5	15.1	27.0	25.4	15.9	17.8	136.4	231.2
Total	128.4	100.0	85.8	107.1	125.0	88.8	102.8	738.0	1,390.5

TABLE 17 — UNEMPLOYED PERSONS: DURATION OF UNEMPLOYMENT, QUEENSLAND

Duration of unemployment	1992			1993		
	September	October	November	September	October	November
MALES						
	'000	'000	'000	'000	'000	'000
Unemployed						
Under 4 weeks	11.3	9.1	11.3	12.7	9.4	11.7
4 and under 8 weeks	8.0	8.6	10.7	10.9	9.2	8.7
8 and under 13 weeks	10.9	8.8	9.5	9.2	7.9	7.9
13 and under 26 weeks	12.5	13.5	9.8	12.1	11.2	10.5
26 and under 52 weeks	19.9	18.7	23.9	20.8	18.2	18.1
52 weeks and over	27.9	27.6	28.1	34.1	29.8	31.3
Total	90.5	86.2	93.3	99.9	85.7	88.1
	weeks	weeks	weeks	weeks	weeks	weeks
Median duration of unemployment	26	26	30	30	28	31
FEMALES						
	'000	'000	'000	'000	'000	'000
Unemployed						
Under 4 weeks	12.3	10.1	11.8	12.3	12.8	9.2
4 and under 8 weeks	5.7	6.2	6.1	7.3	9.9	10.1
8 and under 13 weeks	7.0	5.8	4.0	6.7	4.8	7.3
13 and under 26 weeks	7.1	5.9	7.3	6.0	6.8	7.1
26 and under 52 weeks	15.0	13.7	10.8	14.8	11.3	15.4
52 weeks and over	15.5	14.6	18.7	15.7	14.7	18.1
Total	62.7	56.3	58.8	62.9	60.2	67.1
	weeks	weeks	weeks	weeks	weeks	weeks
Median duration of unemployment	22	26	26	22	15	25
PERSONS						
	'000	'000	'000	'000	'000	'000
Unemployed						
Under 4 weeks	23.7	19.1	23.1	25.1	22.1	20.9
4 and under 8 weeks	13.6	14.8	16.8	18.2	19.1	18.8
8 and under 13 weeks	17.9	14.6	13.5	15.9	12.7	15.2
13 and under 26 weeks	19.6	19.4	17.2	18.2	18.0	17.6
26 and under 52 weeks	34.9	32.4	34.6	35.6	29.5	33.4
52 weeks and over	43.4	42.2	46.8	49.8	44.5	49.4
Total	153.1	142.5	152.0	162.8	145.9	155.2
	weeks	weeks	weeks	weeks	weeks	weeks
Median duration of unemployment	26	26	26	26	26	26

TABLE 18 — UNEMPLOYED PERSONS: DURATION OF UNEMPLOYMENT BY STATISTICAL REGION, QUEENSLAND, NOVEMBER 1993

Region	Unemployed			Median duration of unemployment weeks
	Under 13 weeks	13 weeks and over	Total	
	'000	'000	'000	
MALES				
<i>Brisbane</i>	12.7	26.3	39.1	32
Brisbane City Inner Ring	2.9	7.6	10.5	* 43
Brisbane City Outer Ring	3.1	7.0	10.1	* 31
South and East BSD Balance	* 2.6	4.7	7.4	* 36
North and West BSD Balance	4.1	7.0	11.1	25
<i>Balance of Queensland</i>	15.6	33.5	49.1	31
South and East Moreton	* 2.1	8.9	11.0	42
North and West Moreton	* 1.5	5.8	7.3	* 52
Wide Bay-Burnett	* 2.8	3.9	6.7	* 16
Darling Downs and South-West	* 1.4	3.9	5.3	* 28
Mackay, Fitzroy and Central-West	3.7	4.2	8.0	* 17
Northern and North-West	* 2.1	* 1.7	3.8	* 8
Far North	* 1.9	5.1	7.0	* 47
Queensland	28.3	59.8	88.1	31
FEMALES				
<i>Brisbane</i>	12.8	17.3	30.1	18
Brisbane City Inner Ring	* 1.8	5.6	7.4	* 26
Brisbane City Outer Ring	4.1	2.7	6.9	* 8
South and East BSD Balance	* 2.7	3.6	6.4	* 17
North and West BSD Balance	4.1	5.3	9.4	* 15
<i>Balance of Queensland</i>	13.7	23.3	37.0	26
South and East Moreton	* 2.0	5.8	7.9	* 45
North and West Moreton	* 2.5	5.6	8.1	* 26
Wide Bay-Burnett	* 1.3	* 3.0	4.3	* 25
Darling Downs and South-West	* 0.7	* 2.4	3.1	* 43
Mackay, Fitzroy and Central-West	2.9	3.1	6.0	* 16
Northern and North-West	2.8	* 1.5	4.3	* 9
Far North	* 1.4	* 1.8	* 3.2	* 32
Queensland	26.5	40.6	67.1	25
PERSONS				
<i>Brisbane</i>	25.5	43.6	69.2	26
Brisbane City Inner Ring	4.7	13.2	17.9	32
Brisbane City Outer Ring	7.2	9.7	17.0	20
South and East BSD Balance	5.4	8.3	13.7	20
North and West BSD Balance	8.2	12.3	20.5	25
<i>Balance of Queensland</i>	29.2	56.8	86.0	27
South and East Moreton	4.2	14.7	18.8	42
North and West Moreton	4.0	11.4	15.4	36
Wide Bay-Burnett	4.1	6.9	11.0	24
Darling Downs and South-West	* 2.1	6.3	8.4	* 28
Mackay, Fitzroy and Central-West	6.7	7.3	14.0	16
Northern and North-West	4.9	3.2	8.1	* 8
Far North	3.3	6.9	10.2	* 39
Queensland	54.8	100.4	155.2	26

TABLE 19 — UNEMPLOYED PERSONS AND UNEMPLOYMENT RATES: INDUSTRY AND OCCUPATION OF LAST FULL-TIME JOB, QUEENSLAND

<i>Unemployment category, industry division and occupation group</i>	<i>November 1992</i>		<i>February 1993</i>		<i>May 1993</i>		<i>August 1993</i>		<i>November 1993</i>	
	<i>Number</i>	<i>Rate</i>	<i>Number</i>	<i>Rate</i>	<i>Number</i>	<i>Rate</i>	<i>Number</i>	<i>Rate</i>	<i>Number</i>	<i>Rate</i>
	<i>'000</i>	<i>%</i>	<i>'000</i>	<i>%</i>	<i>'000</i>	<i>%</i>	<i>'000</i>	<i>%</i>	<i>'000</i>	<i>%</i>
Persons who had worked full-time for 2 weeks or more in the last 2 years	82.9	5.7	102.5	7.1	92.1	6.3	86.3	6.0	87.2	5.9
Industry division										
Agriculture, forestry, fishing and hunting	7.6	8.9	10.5	11.4	7.7	8.7	6.9	7.7	6.3	6.8
Manufacturing	17.2	9.2	18.7	10.3	17.3	9.4	14.2	7.9	16.7	8.7
Construction	11.1	8.9	12.3	9.7	14.6	10.8	12.6	9.4	8.2	6.1
Wholesale and retail trade	16.8	5.3	21.7	6.8	23.3	7.1	20.8	6.6	18.0	5.5
Community services	6.3	2.4	6.1	2.4	5.0	2.0	6.4	2.4	6.8	2.5
Recreation, personal and other services	8.9	7.1	13.1	9.8	9.5	6.8	11.7	8.7	14.9	11.5
Other industries	14.9	4.4	20.0	5.9	14.6	4.5	13.7	4.1	16.3	4.8
Occupation group										
Managers and administrators	* 3.3	* 2.4	3.9	2.4	4.7	3.1	3.8	2.7	3.6	2.5
Professionals	* 2.6	* 1.7	4.1	2.8	* 3.1	* 2.0	* 2.5	* 1.5	4.3	2.7
Para-professionals	* 2.3	* 2.9	* 2.9	* 3.8	* 2.3	* 3.1	* 1.0	* 1.3	* 3.2	* 3.6
Tradespersons	15.3	7.0	16.9	7.7	15.5	7.1	14.7	6.7	12.5	5.7
Clerks	10.2	4.3	11.6	4.8	9.2	3.9	10.2	4.6	8.2	3.6
Salespersons and personal service workers	13.6	5.2	19.5	7.7	14.5	5.5	17.3	6.7	15.5	6.0
Plant and machine operators and drivers	7.2	7.0	8.4	8.2	7.6	7.2	8.9	7.8	10.2	8.5
Labourers and related workers	28.2	11.3	34.7	14.0	34.8	13.7	27.8	10.8	29.4	11.2
Reason for ceasing last full-time job										
Job loser										
Laid off, retrenched	36.3	..	48.5	..	46.5	..	43.6	..	40.3	..
Other	19.3	..	23.3	..	19.1	..	17.0	..	18.9	..
Job leaver	27.3	..	30.7	..	26.4	..	25.7	..	28.1	..
Other										
Persons looking for first job	12.9	..	14.6	..	11.1	..	12.9	..	13.9	..
Former workers	53.2	..	60.4	..	54.0	..	59.7	..	51.8	..
Persons stood down	* 3.1	..	* 1.8	..	4.3	..	* 1.5	..	* 2.3	..
Total	152.0	10.1	179.3	11.8	161.5	10.6	160.4	10.5	155.2	10.0
Looking for full-time work	126.4	11.0	152.4	12.9	140.0	11.9	134.1	11.5	131.0	11.0
Looking for part-time work	25.7	7.2	26.9	7.9	21.5	6.2	26.3	7.4	24.2	6.9

SPECIAL SURVEYS DATA RELATING TO THE LABOUR FORCE

Although emphasis in the population survey is placed on the regular collection of data on demographic and labour force characteristics, supplementary and special surveys of particular aspects of the labour force are carried out from time to time. The results of these surveys on labour force and related topics are published separately as shown below.

<i>Title of publication</i>	<i>Latest Data</i>	<i>Catalogue No.</i>
<i>Alternative Working Arrangements, Australia</i>	September to November 1986	6341.0
<i>Annual and Long Service Leave Taken, Australia</i>	May 1988 to April 1989	6317.0
<i>Career Experience, Australia</i>	February 1993	6254.0
<i>Career Paths of Persons With Trade Qualifications, Australia</i>	1989	6243.0
<i>Career Paths of Qualified Nurses, Australia</i>	March to July 1989	6277.0
<i>Child Care, Australia</i>	November 1990	4402.0
<i>Employment Benefits, Australia</i>	August 1992	6334.0
<i>How Workers Get Their Training, Australia</i>	1989	6278.0
<i>Survey of Income and Housing Costs and Amenities</i>	1990	6546.0
<i>Job Search Experience of Unemployed Persons, Australia</i>	July 1993	6222.0
<i>Labour Force Experience, Australia</i>	March 1993	6206.0
<i>Labour Force Status and Educational Attainment, Australia</i>	February 1993	6235.0
<i>Labour Force Status and Other Characteristics of Families, Australia</i>	June 1993	6224.0
<i>Labour Force Status and Other Characteristics of Migrants, Australia</i>	September 1990	6250.0
<i>Labour Mobility, Australia</i>	February 1992	6209.0
<i>Multiple Jobholding, Australia</i>	July 1991	6216.0
<i>Participation in Education, Australia</i> (Formerly <i>Labour Force Status and Educational Attendance, Australia</i>)	September 1992	6272.0
<i>Persons Employed at Home, Australia</i>	March 1992	6275.0
<i>Persons Not in the Labour Force, Australia</i>	September 1992	6220.0
<i>Persons Who Had Re-entered the Labour Force, Australia</i>	May 1993	6264.0
<i>Persons Who Have Left the Labour Force, Australia</i>	April 1991	6267.0
<i>Retirement and Retirement Intentions, Australia</i>	October 1992	6238.0
<i>Successful and Unsuccessful Job Search Experience, Australia</i>	July 1992	6245.0
<i>Superannuation, Australia</i>	November 1991	6319.0
<i>Trade Union Members, Australia</i>	August 1992	6325.0
<i>Transition From Education to Work, Australia</i>	May 1992	6227.0
<i>Underemployed Workers, Australia</i>	May 1991	6265.0
<i>Weekly Earnings of Employees (Distribution), Australia</i>	August 1992	6310.0

Special tabulations of data from these surveys are available. Please contact Information Inquiries on (07) 222 6351 for further information.

CUSTOMISED REPORTS

Summary reports at the national, State and regional level can be prepared for any aspect of the labour force required, or on any aspect of employment, earnings or industrial conditions. Please contact Information Inquiries on (07) 222 6351 for details or write to Australian Bureau of Statistics, GPO Box 9817, Brisbane Q 4001.

RECENT RELEASES OF INTEREST

Job Search Experience of Unemployed Persons, Australia, July 1993 (6222.0), (\$12.70)

This publication contains estimates of unemployed persons classified by difficulties in finding work, duration of current period of unemployment, age, whether would move interstate or intrastate if offered a suitable job, birthplace, active steps taken to find work, whether looking for full-time or part-time work, educational attainments, number of spells of looking for work in the previous 12 months.

Labour Force Status and Other Characteristics of Families, Australia, June 1993 (6224.0), (\$12.70)

This publication contains information on family type (e.g. married-couple, one-parent) classified by family size, number of employed and unemployed family members, labour force status of husband/wife/sole parent, birthplace of husband/wife/sole parent, number of dependent children, age of husband/wife/sole parent/dependent children.

Please contact Information Inquiries on (07) 222 6351 for further information.

EARLY RELEASE OF MONTHLY REGIONAL LABOUR FORCE DATA

Labour force data for Queensland regions are available each month as an annual subscription service or on an ad hoc per month basis.

By subscribing to this service you will receive regional labour force data soon after the release of *The Labour Force, Australia, Preliminary* (6202.0). Information will be provided on the number of persons employed, unemployed, persons in the labour force, persons not in the labour force, the unemployment rate, the participation rate and youth unemployment for the 11 statistical regions in Queensland.

If you are interested in subscribing to this service please complete the order form below and mail to:

*Client Support Section, ABS,
GPO Box 9817,
Brisbane Q 4001
(Telephone: 07 222 6068)*

✂-----

I wish to receive by mail or fax Regional Labour Force data each month at an annual subscription of \$240 or \$25 on an ad hoc per month basis.

Name: _____ Position: _____

Organisation: _____ Telephone: _____

Fax No.: _____

Address: _____

Enclosed is my cheque/money order for \$ _____ (made payable to: CPM, Australian Bureau of Statistics)

OR Debit my credit card: Bankcard Mastercard Visa for \$ _____

Card number: _____ Expiry date: _____

Name on card: _____

Signature: _____ Date: _____

**STATISTICAL REGIONS,
QUEENSLAND**

**STATISTICAL REGIONS,
BRISBANE STATISTICAL DIVISION**



Brisbane City Inner Ring

- | | | | |
|------------------|------------------------------------|-------------------|------------------|
| Albion | Clayfield | Highgate Hill | Red Hill |
| Alderley | Coorparoo | Holland Park | Sherwood |
| Annerley | Corinda | Holland Park West | South Brisbane |
| Ascot | Dutton Park | Indooroopilly | Spring Hill |
| Ashgrove | East Brisbane | Kangaroo Point | St Lucia |
| Balmoral | Enoggera (including Military Camp) | Kedron | Stafford |
| Bardon | Fairfield | Kelvin Grove | Stafford Heights |
| Bowen Hills | Fortitude Valley - Inner | Lutwyche | Taringa |
| Bulimba | Fortitude Valley - Remainder | Milton | Tarragindi |
| Camp Hill | Graceville | Moorooka | Toowong |
| Cannon Hill | Grange | Morningside | West End |
| Carina | Greenslopes | New Farm | Wilston |
| Carina Heights | Hamilton | Newmarket | Windsor |
| Carindale | Hawthorne | Newstead | Woolloongabba |
| Chelmer | Hendra | Norman Park | Wooloowin |
| City - Inner | Herston | Nundah | Yeerongpilly |
| City - Remainder | | Paddington | Yeronga |

EXPLANATORY NOTES

The population survey

The survey is based on a multi-stage area sample of private dwellings and non-private dwellings (hotels, motels, etc.) and usually covers approximately three-fifths of 1 per cent of the population of Queensland. The information is obtained from the occupants of selected dwellings by carefully chosen and specially trained interviewers. The interviews are generally conducted during a period of 2 weeks beginning on the Monday between the 6th and 12th of each month. The information obtained relates to the week before the interview (i.e. the reference week).

Scope

2. The labour force survey includes all persons aged 15 years and over except:

- (a) members of the permanent defence forces;
- (b) certain diplomatic personnel of overseas governments, customarily excluded from Census and estimated populations;
- (c) overseas residents in Australia and
- (d) members of non-Australian defence forces (and their dependants) stationed in Australia.

Coverage

3. In the labour force survey, coverage rules are applied which aim to ensure that each person is associated with only one dwelling and hence has only one chance of selection. The coverage rules are, necessarily, a balance between theoretical and operational considerations. Nevertheless, the chance of a person being enumerated at two separate dwellings in the one survey is considered to be negligible.

4. Persons who are away from their usual residence for 6 weeks or less at the time of interview are enumerated at their usual residence when relevant information can be obtained from other usual residents present at the time of the survey.

Supplementary and special surveys

5. Emphasis in the population survey is placed on the regular collection of specific data on demographic and labour force characteristics of the population. However, supplementary and special surveys of particular aspects of the labour force or of other subjects are carried out from time to time. Statistics from these surveys are published and are available on request. A list of survey publications on labour force and related topics is shown on page 22.

Population benchmarks

6. Labour force survey estimates of persons employed, unemployed and not in the labour force are calculated in

such a way as to add up to the independently estimated distribution of the population aged 15 years and over by age and sex. This procedure compensates for under-enumeration in the survey and leads to more reliable estimates. The independent population statistics (benchmarks) are the latest available estimates at the time the labour force survey is conducted, but they usually differ from the official population estimates subsequently published in the quarterly ABS publication *Australian Demographic Statistics* (3101.0) because they are necessarily derived from incomplete information about population changes.

7. Since regular estimates of the population are not available at the regional level, the State benchmarks were used to produce regional estimates. This methodology assumes a common pattern of under-enumeration at the regional level and also ensures that regional estimates add to the State totals.

8. While this procedure can be expected to provide reliable estimates of unemployment and participation rates, it cannot be taken as completely reliable for estimates of numbers involved. For this reason estimates of numbers in each region have not been added to provide an estimate of the total civilian population aged 15 years and over.

Revision of series

9. Survey estimates are not revised for the usually small amendments of population benchmarks arising from new data on deaths and overseas and internal migration. Revisions are made, however, after each census of population and housing and when population estimation bases are reviewed. These revisions affect unadjusted, seasonally adjusted and trend estimates. The last such revision was made in February 1989 to take account of the results of the 1986 Census of Population and Housing. This affected all the monthly estimates from January 1984 to January 1989.

10. From September 1987, regional estimates are based on statistical regions. Prior to September 1987, estimates were based on differently composed dissemination regions.

11. The estimates shown in this publication are based entirely on place of usual residence. Prior to October 1982, the estimates were based on a combination of place of enumeration and place of usual residence.

12. Until February 1978, surveys were conducted in February, May, August and November each year from 1964. From February 1978 the survey has been conducted on a monthly basis.

13. The questionnaire used in the survey for the collection of labour force data has been revised a number of times. Details of these changes have been published in *Information Paper: Questionnaires Used in the Labour Force Survey* (6232.0) in March 1978, December 1981, August 1984, June 1986, June 1991 and March 1993.

EXPLANATORY NOTES — *continued***Comparability of series**

14. As noted in paragraph 9, estimates from January 1984 have been revised to conform to revised population estimates following the 1986 Census of Population and Housing and are thus not strictly comparable with estimates for periods prior to January 1984 which have not been revised.

15. Regional estimates are based on statistical regions from September 1987. They are not comparable to estimates prior to that date which were based on differently composed dissemination regions.

16. Comparability with estimates produced from the quarterly survey of employment and earnings is affected by the use of a different survey methodology and definitions. The labour force survey provides estimates of people in jobs whereas the survey of employment and earnings provides an estimate of the number of jobs held by wage and salary earners. A more detailed description of the differences between these two series is provided in *Information Paper: Comparison of Employment Estimates from the Labour Force Survey and the Survey of Employment and Earnings* (6263.0).

Reliability of estimates

17. Estimates in this publication are subject to two sources of error.

- (a) *Sampling error.* Since the estimates are based on information obtained from occupants of a sample of dwellings they, and the movements derived from them, may differ from the figures that would have been produced if all dwellings had been included in the survey. More information on this topic is given in the Technical Notes.
- (b) *Non-sampling error.* Inaccuracies may occur because of imperfections in reporting by respondents and interviewers and errors made in coding and processing data. These inaccuracies may occur in any enumeration, whether it be a full count or a sample. Every effort is made to reduce the non-sampling error to a minimum by careful design of questionnaires, intensive training and supervision of interviewers and efficient operating procedures.

Survey sample redesign

18. The labour force survey sample was redesigned and reselected using information collected in the 1991 Census of Population and Housing. The new sample was phased in over the period September to December 1992. For details, see *Information Paper: Labour Force Survey — Sample Design* (6269.0).

19. For the most part, one quarter of the new sample was introduced each month so that, by December 1992, the entire new sample was in place. Replacement occurred generally at the rotation group level with two groups substituted each month. Such a pattern of implementation

means that any changes to labour force estimates due to differences between the two samples, or any other influences, was spread over 4 months rather than being concentrated in one inter-month period.

20. This phase-in scheme applied to the private dwelling sample in urban areas. The new sample for non-private dwellings and private dwellings in rural areas was introduced in a single stage in November 1992.

21. The sampling fraction differs for States and Territories to enable estimates of reasonable accuracy to be produced at State level as well as for Australia. The sampling fraction for Queensland is 1 in 195.

Potential effects on labour force survey estimates

22. Implications for estimates produced from the Labour Force Survey due to sample redesign and its implementation are as follows:

- (a) the sampling error in Queensland increased overall initially by about 8 per cent over the previous level but will decline gradually during the life of the new sample. There was also higher standard errors for the estimates of month-to-month movements produced during the period September 1992 to December 1992 compared with those for the corresponding series produced prior to this period and from January 1993 onwards. *Overall, these are estimated to be up to 20 per cent higher than the normal standard errors on monthly movements.*
- (b) analysis has shown that the unemployment rate was marginally higher (less than 0.5 percentage points) for those persons in sample for the first time. Normally, this will not affect the overall estimates of month-to-month movements because the number of persons in sample does not change significantly. However, during the transition period, there were twice as many as usual in sample for the first time. This may have caused a small upward movement (of less than 0.1 percentage points) in the unemployment rate from August 1992 to September 1992 and a compensating decrease from December 1992 to January 1993.

Changes to regions

23. The following changes to the existing Queensland labour force dissemination regions took effect from September 1992:

The Brisbane Major Statistical Region has been expanded to include all of the Shire of Pine Rivers and additional parts of the Shires of Caboolture, Beaudesert, Moreton and Albert. 'South and East BSD Balance Statistical Region' and 'North and West BSD Balance Statistical Region' have been enlarged with corresponding reductions to 'South and East Moreton Statistical Region' and 'North and West Moreton Statistical Region'.

EXPLANATORY NOTES — *continued***Seasonal adjustment**

24. Seasonal adjustment is a means of removing the estimated effects of normal seasonal variation from the series so that the effect of other influences on the series can be more clearly recognised. Seasonal adjustment does not remove the irregular or non-seasonal influences which may be present in any particular month. Influences that are volatile can still make it difficult to interpret the movement of the series even after adjustment for seasonal variation. Seasonal factors are reviewed annually to take account of each additional year of original data.

Trend estimation

25. Smoothed seasonally adjusted series produce a measure of trend by reducing the impact of the irregular component of the series. The trend estimates are derived by applying a 13-term Henderson-weighted moving average to the respective seasonally adjusted series. These trend series are used to analyse the underlying behaviour of the series over time.

26. While this smoothing technique enables estimates to be produced which include the latest month, it does result in revisions to the most recent months as additional observations become available. Generally, subsequent revisions become smaller and after 3 months have a negligible impact on the series. There will also be revisions as a result of the annual review of seasonal factors.

Month-to-month movements

27. Care should be taken in the interpretation of month-to-month movements in labour force survey estimates as they are subject to sampling and non-sampling variability as explained in paragraph 17.

Related publications

28. Users may also wish to refer to the following publications which are available on request:

- The Labour Force, Australia, Preliminary* (6202.0) – Monthly (\$10.70)
- The Labour Force, Australia* (6203.0) – Monthly (\$16.30)
- The Labour Force, Australia* (6204.0) – Latest issue: 1978 to 1989

Monthly Summary of Statistics (1304.3) – Monthly (\$9.70)

Economic Indicators (1307.3) – Monthly (\$6.60)

Information Paper: Comparison of Employment Estimates from the Labour Force Survey and the Survey of Employment and Earnings (6263.0) – Latest issue: July 1985

Information Paper: A Guide to Smoothing Time Series — Estimates of 'Trend' (1316.0) – Latest issue: 1987

Information Paper: Time Series Decomposition — an Overview (1317.0) – Latest issue: 1987

Information Paper: Labour Force Survey — Sample Design (6269.0) – Latest issue: September 1992

Information Paper: Labour Force Survey — Measuring Teenage Unemployment (6270.0) – Latest issue: October 1987

Information Paper: Measuring Employment and Unemployment (6279.0) – New issue: August 1991

Information Paper: Regional Labour Force Statistics (6262.0) – Latest issue: September 1992

29. Current publications produced by the ABS are listed in the *Catalogue of Publications and Products* (1101.0). The ABS also issues the *Publications Advice* (1105.0) on Tuesdays and Fridays which lists publications to be released in the next few days. Both the *Catalogue* and the *Publications Advice* are available from any ABS office.

Unpublished statistics

30. As well as the statistics included in this and related publications, the ABS may have other relevant unpublished data available. Inquiries should be made to the contact shown at the front of this publication.

Symbols and other usages

- .. not applicable
- nil or rounded to zero
- * subject to sampling variability too high for most practical purposes; See paragraphs 8 and 9 in the Technical Notes

31. Where figures have been rounded, discrepancies may occur between totals and the sums of the component items.

TECHNICAL NOTES

Estimation procedure

The labour force estimates are derived from the monthly population survey by use of a complex ratio estimation procedure, which ensures that the survey estimates conform to an independently estimated distribution of the population by age and sex, rather than to the age and sex distribution within the sample itself. This procedure compensates for under-enumeration in the survey and leads to more reliable estimates.

2. Since regular estimates of the population are not available at the regional level, the State benchmarks were used to produce regional estimates. This methodology assumes a common pattern of under-enumeration at the regional level and also ensures that regional estimates add to the State totals.

Data quality

3. Two types of error are possible in an estimate based on a sample survey: sampling error and non-sampling error. *Non-sampling error* is explained in the Explanatory Notes, paragraph 17(b). The *sampling error* is a measure of the variability that occurs by chance because a sample, rather than the entire population, is surveyed.

Standard error of estimates

4. One measure of the variability of estimates which occurs as a result of surveying only a sample of the population is the *standard error* (SE).

5. There are about two chances in three that a sample estimate will differ by less than one standard error from the figure that would have been obtained if all dwellings had been included and about 19 chances in 20 that the difference will be less than two standard errors.

6. The standard error of an estimate can be obtained from Table A. Linear interpolation should be used to calculate the standard error of estimates falling between the sizes of estimates listed in the table (see example following Table A).

7. Standard errors for some estimates, e.g. unemployment, can vary from those shown in the tables.

Methods for calculating the standard errors of these estimates are shown in the table below.

Relative standard error

8. Another measure of sampling variability is the *relative standard error* (RSE). This is obtained by expressing the standard error as a percentage of the estimate to which it refers. The relative standard error is a useful measure in that it provides an immediate indication of the percentage errors likely to have occurred due to sampling and thus avoids the need to refer also to the size of the estimate.

9. In the tables in this publication, only estimates with relative standard errors of 25 per cent or less, and percentages based on such estimates, are considered sufficiently reliable for most purposes. However, estimates and percentages with larger relative standard errors have been included and are preceded by an asterisk (e.g. * 3.0) to indicate they are subject to high standard errors and should be used with caution. Small estimates are subject to such high standard errors (relative to the size of the estimate) as to detract seriously from their value for most reasonable use.

Standard error of movement

10. The movement in the level of an estimate is also subject to sampling variability. The standard error of the movement depends on the levels of the estimates from which the movement is obtained rather than the size of the movement. Standard errors of monthly movements are given in Table B. These estimates apply only to estimates of movements between two consecutive months.

11. Movements between corresponding months of consecutive quarters, i.e. *quarterly movements*, can be obtained by multiplying the figure in Table B by 1.21. Standard errors of movements between corresponding months of consecutive years, i.e. *annual movements*, can be obtained by multiplying the figures in Table A by 1.3. When using Tables A or B to calculate standard errors of movements, refer to the larger of the two estimates from which the movement is derived.

METHODS FOR CALCULATING THE STANDARD ERRORS FOR SELECTED ESTIMATES

<i>Measure of reliability to be determined</i>	<i>Method</i>
Standard errors of estimates of employed persons. Standard errors of estimates of unemployed persons. Standard errors of estimates of persons not in the labour force. Standard errors of rates (e.g. the unemployment rate which is based on the number of unemployed persons expressed as a percentage of the number of persons in the labour force).	Determine the SE from Table A directly. Multiply the SE from Table A by 0.97. Multiply the SE from Table A by 1.06. Determine the RSE of the numerator (x) and the denominator (y) then apply the following formula.
Standard error of average hours worked.	$RSE(x/y) = \sqrt{RSE(x)^2 + RSE(y)^2}$ Determine the RSE for the number of persons on which the average is based and multiply this by 0.7.
Standard error of median duration of unemployment.	Determine the RSE for the number of persons on which the median is based and multiply this by 2.0.
Standard error of monthly movements. Standard error of quarterly movements.	Using Table B, look up the SE of the larger estimate. Determine the standard error of the larger estimate (using Table A) and multiply this by 1.21.
Standard error of annual movements.	Determine the standard error of the larger estimate (using Table A) and multiply this by 1.3.

TECHNICAL NOTES — continued

TABLE A — STANDARD ERRORS OF ESTIMATES FOR STATISTICAL REGIONS AND QUEENSLAND

Size of estimate	Brisbane (MSR) Statistical Regions				
	Queensland, Brisbane (MSR), Balance of Queensland	Brisbane City Inner Ring	Brisbane City Outer Ring	South and East Brisbane Statistical Division Balance	North and West Brisbane Statistical Division Balance
	No.	No.	No.	No.	No.
200	210	160	170	170	170
300	260	200	210	220	210
500	340	260	270	280	280
700	400	310	320	340	330
1,000	480	380	390	410	400
1,500	590	470	480	500	500
2,000	680	540	560	590	580
2,500	750	610	630	660	650
3,000	820	670	690	720	720
4,000	940	780	800	840	830
5,000	1,050	880	900	950	940
7,000	1,200	1,050	1,100	1,150	1,100
10,000	1,400	1,250	1,300	1,350	1,350
15,000	1,700	1,550	1,600	1,700	1,650
20,000	1,950	1,800	1,850	1,950	1,950
30,000	2,300	2,250	2,300	2,450	2,400
50,000	2,850	2,950	3,050	3,150	3,150
70,000	3,250	3,500	3,600	3,800	3,750
100,000	3,750	4,250	4,350	4,550	4,500
150,000	4,400	5,200	5,400	5,600	5,600
200,000	4,950	6,100	6,300	6,600	6,500
300,000	5,800	7,500	7,700	8,100	8,000
500,000	7,000	9,900	10,100	10,600	10,500
1,000,000	8,900
2,000,000	11,300

Size of estimate	Balance of Queensland Statistical Regions						
	South and East Moreton	North and West Moreton	Wide Bay-Burnett	Darling Downs and South-West	Mackay, Fitzroy and Central-West	Northern and North-West	Far North
	No.	No.	No.	No.	No.	No.	No.
200	160	170	180	180	180	170	190
300	200	220	230	229	220	210	240
500	270	280	300	290	290	270	310
700	320	340	350	340	340	320	370
1,000	380	410	430	410	420	390	440
1,500	470	500	530	510	510	480	550
2,000	550	590	620	600	600	560	640
2,500	620	660	690	670	670	630	720
3,000	680	720	760	740	740	690	790
4,000	790	840	890	860	860	810	920
5,000	890	950	1000	960	970	910	1,050
7,000	1,050	1,150	1,200	1,150	1,150	1,100	1,250
10,000	1,300	1,350	1,450	1,400	1,400	1,300	1,500
15,000	1,600	1,700	1,750	1,700	1,700	1,600	1,850
20,000	1,850	1,950	2,050	2,000	2,000	1,900	2,150
30,000	2,300	2,400	2,550	2,450	2,500	2,350	2,650
50,000	3,000	3,150	3,350	3,250	3,250	3,050	3,450
70,000	3,550	3,800	4,000	3,850	3,850	3,650	4,100
100,000	4,300	4,550	4,800	4,650	4,650	4,350	4,950
200,000	6,200	6,600	6,900	6,700	6,700	6,300	7,100
300,000	7,600	8,100	8,500	8,300	8,300	7,800	8,800
500,000	10,000	10,600	11,200	10,800	10,800	10,200	11,500

TECHNICAL NOTES — *continued***Linear interpolation**

12. Linear interpolation is used to determine the standard error of an estimate which falls between two values listed in the *size of estimate* column in Tables A or B. Linear interpolation is best described using an example. In November 1993 there were 580,300 (X_e) employed females in Queensland. This estimate falls between the values 500,000 (X_i) and 1,000,000 (X_u) in Table A.

13. The standard error of the estimate is determined as follows:

$$\begin{aligned} \text{Firstly calculate } F &= \frac{X_e - X_i}{X_u - X_i} \\ &= \frac{580,300 - 500,000}{1,000,000 - 500,000} \\ &= 0.161 \end{aligned}$$

Secondly, calculate the standard error of the estimate, $SE(X_e)$ thus,

$$\begin{aligned} SE(X_e) &= SE(X_i) + F[SE(X_u) - SE(X_i)] \\ &= 7,000 + 0.161 \times [8,900 - 7,000] \\ &= 7,306 \\ &= 7,300 \text{ rounding to the nearest 100.} \end{aligned}$$

Therefore the standard error of the number of employed females in Queensland in November 1993 (580,300) is 7,300.

TABLE B — STANDARD ERRORS OF MONTHLY MOVEMENTS FOR STATISTICAL REGIONS AND QUEENSLAND

Size of estimate	Brisbane (MSR) Statistical Regions						
	Queensland; Brisbane (MSR); Balance of Queensland		Brisbane City Inner Ring	Brisbane City Outer Ring	South and East Brisbane Statistical Division Balance	North and West Brisbane Statistical Division Balance	
	No.	%	No.	No.	No.	No.	No.
1,000	580	58.0	330	310	250		320
1,500	660	44.0	400	370	300		380
2,000	730	36.5	450	420	340		440
2,500	790	31.6	500	470	370		480
3,000	840	28.0	540	510	400		520
4,000	930	23.3	610	570	460		590
5,000	1,000	20.0	670	630	500		650
7,000	1,150	16.4	770	730	580		750
10,000	1,250	12.5	900	850	680		880
15,000	1,450	9.7	1,100	1,000	810		1,050
20,000	1,600	8.0	1,200	1,150	920		1,200
30,000	1,850	6.2	1,450	1,350	1,100		1,400
50,000	2,200	4.4	1,800	1,700	1,350		1,750
100,000	2,800	2.8	2,450	2,300	1,850		2,400
200,000	3,550	1.8	3,300	3,150	2,500		3,200
300,000	4,100	1.4	3,950	3,750	2,950		3,850

Size of estimate	Balance of Queensland Statistical Regions						
	South and East Moreton	North and West Moreton	Wide Bay-Burnett	Darling Downs and South-West	Mackay, Fitzroy and Central-West	Northern and North-West	Far North
	No.	No.	No.	No.	No.	No.	No.
1,000	290	300	340	320	340	320	290
1,500	340	350	400	390	410	390	340
2,000	390	400	460	440	460	440	390
2,500	430	440	500	480	510	480	430
3,000	460	480	550	520	550	520	460
4,000	530	540	620	590	620	590	530
5,000	580	600	680	650	680	650	580
7,000	670	690	790	760	790	750	670
10,000	780	810	920	880	920	880	780
15,000	930	960	1,100	1,050	1,100	1,050	930
20,000	1,050	1,100	1,250	1,200	1,250	1,200	1,050
30,000	1,250	1,300	1,500	1,400	1,500	1,400	1,250
50,000	1,550	1,600	1,850	1,750	1,850	1,750	1,550
100,000	2,100	2,200	2,500	2,400	2,500	2,400	2,150
200,000	2,850	2,950	3,350	3,250	3,400	3,200	2,850
300,000	3,400	3,550	4,000	3,850	4,050	3,850	3,450

GLOSSARY

Attending school. Persons aged 15 to 19 years who, during the reference week, were enrolled full-time at secondary or high schools.

Attending tertiary educational institution full-time. Persons aged 15 to 24 years who, during the reference week, were enrolled full-time at a TAFE college, university, or other educational institution.

Average hours worked. Aggregate hours worked by a group divided by the number of persons in that group.

Average duration of unemployment. For a group of unemployed persons, the aggregate duration of unemployment divided by the number of persons in the group.

Duration of unemployment. The period from the time a person began looking for work or was stood down, to the end of the reference week. Thus the survey measures current (and continuing) periods of unemployment rather than completed spells. For persons who may have begun looking for work while still employed, the duration of unemployment is defined as the period from the time the person last worked full-time for 2 weeks or more to the end of the reference week.

Employed. Persons aged 15 years and over who, during the reference week:

- (a) worked for 1 hour or more for pay, profit, commission or payment in kind in a job or business or on a farm (comprising employees, employers and self-employed persons);
- (b) worked for 1 hour or more without pay in a family business or on a farm (i.e. unpaid family helpers);
- (c) were employees who had a job but were not at work and were: on paid leave; on leave without pay for less than 4 weeks up to the end of the reference week; stood down without pay because of bad weather or plant breakdown at their place of employment for less than 4 weeks up to the end of the reference week; on strike or locked out; on workers' compensation and expected to be returning to their job; receiving wages or salary while undertaking full-time study or
- (d) were employers, self-employed persons or unpaid family helpers who had a job, business or farm, but were not at work.

Former workers. Unemployed persons who have previously worked full-time for 2 weeks or more but not in the past 2 years.

Full-time workers. Employed persons who usually worked 35 hours or more a week (in all jobs) and others who, although usually working less than 35 hours a week, worked 35 hours or more during the reference week.

Hours worked. The total number of hours a group of employed persons has actually worked during the reference week, not necessarily hours paid for.

Job leavers. Unemployed persons who have worked full-time for 2 weeks or more in the past 2 years and left that job voluntarily, that is, because of unsatisfactory work arrangements, pay or hours; the job was seasonal, temporary or a holiday job and they left that job to return to studies; their last job was running their own business and they closed down or sold that business for reasons other than financial difficulties or any other reasons.

Job losers. Unemployed persons who have worked full-time for 2 weeks or more in the past 2 years and left that job involuntarily, that is, were laid off or retrenched from that job; left that job because of their own ill-health or injury; the job was seasonal or temporary and they did not leave that job to return to studies or their last job was running their own business and the business closed down because of financial difficulties.

Industry. Classified according to the *Australian Standard Industrial Classification (ASIC), 1983* (1201.0 and 1202.0).

Labour force. For any group, persons who were employed or unemployed, as defined.

Labour force status. A classification of the civilian population aged 15 years and over into employed, unemployed or not in the labour force, as defined. The definitions conform closely to the international standard definitions adopted by the International Conferences of Labour Statisticians.

Marital status. Persons are classified as married (husband and wife) if they are reported as being married (including de facto) and their spouse was a usual resident of the household at the time of the survey. The not married category comprises persons who have never married, or are separated, widowed or divorced, as well as those who, although reported as being married, did not have a spouse who usually lived in the household.

Median duration of unemployment. The duration which divides unemployed persons into two equal groups, one comprising persons whose duration of unemployment is above the median and the other, persons whose duration is below it.

Not in the labour force. Persons who were not in the categories employed or unemployed, as defined. They include persons who were keeping house (unpaid), retired, voluntarily inactive, permanently unable to work, persons in institutions (hospitals, jails, sanatoriums, etc.), trainee teachers, members of contemplative religious orders and persons whose only activity during the reference week was jury service or unpaid voluntary work for a charitable organisation.

Occupation. Classified according to the *Australian Standard Classification of Occupations (ASCO), 1986* (1222.0).

GLOSSARY – continued

Participation rate. For any group, the labour force expressed as a percentage of the civilian population aged 15 years and over in the same group. Participation rates for persons classified by birthplace are calculated using population estimates which exclude those in institutions. Participation rates for persons classified by school or tertiary educational institution attendance are calculated using population estimates which include those in institutions.

Part-time workers. Employed persons who usually worked less than 35 hours a week and who did so during the reference week.

Seasonally adjusted series. A time series of estimates with the estimated effects of normal seasonal variation removed. See paragraph 24 of the Explanatory Notes for more detail.

Statistical regions. Classified according to the *Australian Standard Geographical Classification (ASGC), Edition 2.1* (1216.0).

Status of worker. Employed persons classified by whether they were employers, self-employed persons, wage and salary earners (employees), or unpaid family helpers.

Trend series. A smoothed seasonally adjusted series of estimates. See paragraphs 25 and 26 of the Explanatory Notes for more detail.

Unemployed. Persons aged 15 years and over who were not employed during the reference week and:

- (a) had actively looked for full-time or part-time work at any time in the 4 weeks up to the end of the reference week and:

- (i) were available for work in the reference week or would have been available except for temporary illness (i.e. lasting for less than 4 weeks to the end of the reference week);

- (ii) were waiting to start a new job within 4 weeks from the end of the reference week and would have started in the reference week if the job had been available then or

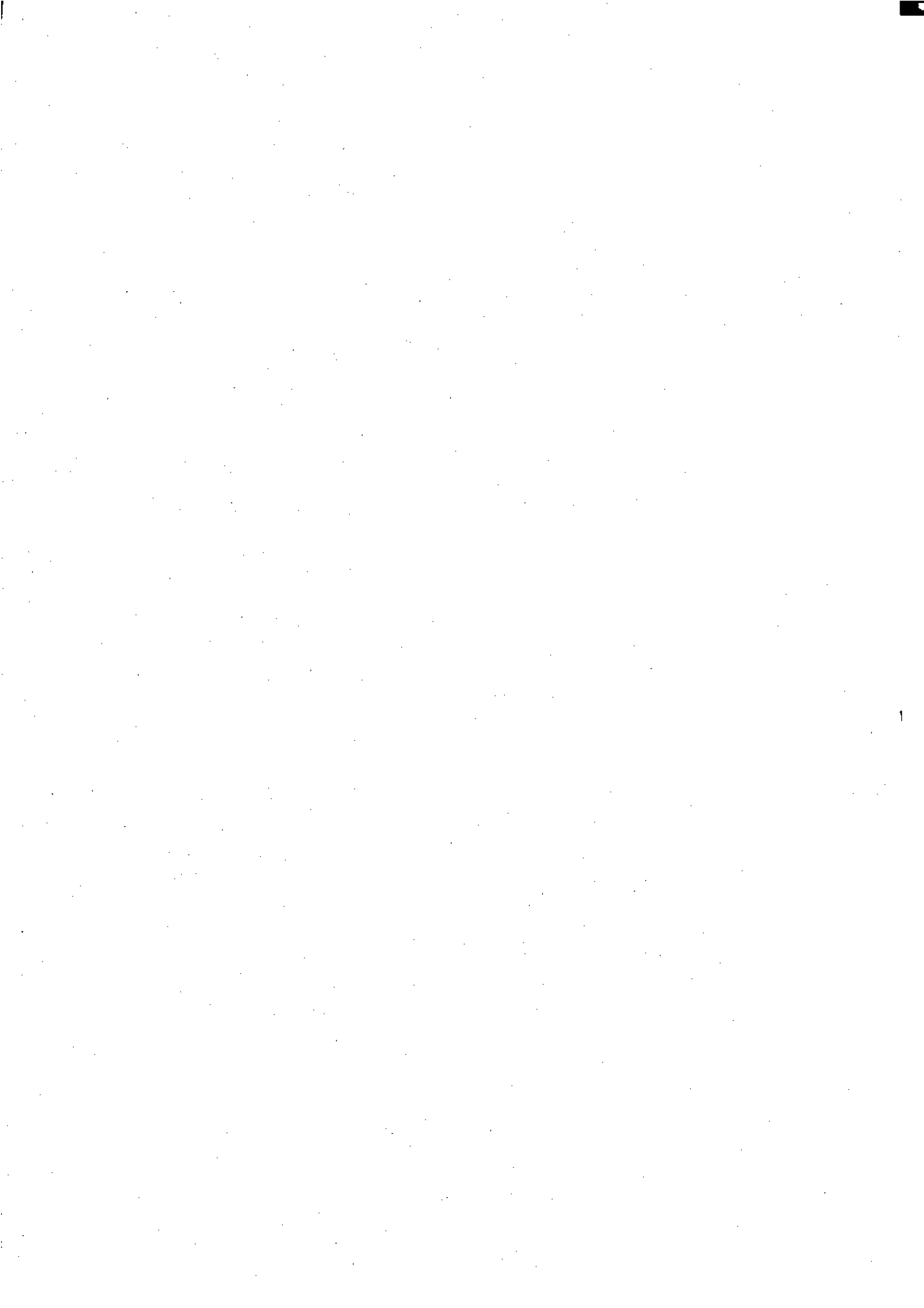
- (b) were waiting to be called back to a full-time or part-time job from which they had been stood down without pay for less than 4 weeks up to the end of the reference week (including the whole of the reference week) for reasons others than bad weather or plant breakdown.

Unemployed persons classified by industry and occupation. Unemployed persons who had worked full-time for 2 weeks or more in the last 2 years are classified according to the industry and occupation of their most recent full-time job.

Unemployed looking for full-time work. Unemployed persons who actively looked for full-time work or were to resume a full-time job, from which they had been stood down.

Unemployed looking for part-time work. Unemployed persons who had actively looked for part-time work only or were to resume a part-time job, from which they had been stood down.

Unemployment rate. For any group, the number of unemployed persons expressed as a percentage of the labour force in the same group.



The Labour Force, Queensland, November 1990

STATISTICS QUEENSLAND

Recommended retail price: \$16.50



2620130011936
ISSN 0313-1912